



**ELECTRONIC COPY**

LG653416957  
Report verification at igi.org



September 21, 2024

IGI Report Number **LG653416957**

Description **LABORATORY GROWN DIAMOND**

Shape and Cutting Style **CUSHION BRILLIANT**

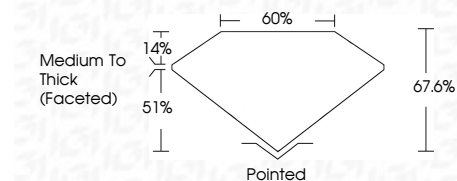
Measurements **8.81 X 6.67 X 4.51 MM**

**GRADING RESULTS**

Carat Weight **2.11 CARATS**

Color Grade **F**

Clarity Grade **VVS 2**



**ADDITIONAL GRADING INFORMATION**

Polish **EXCELLENT**

Symmetry **EXCELLENT**

Fluorescence **NONE**

Inscription(s) **IGI LG653416957**

Comments: This Laboratory Grown Diamond was created by Chemical Vapor Deposition (CVD) growth process. Type IIa



|                          |                              |                           |                        |
|--------------------------|------------------------------|---------------------------|------------------------|
| September 21, 2024       | IGI Report No LG653416957    | <b>2.11 CARATS</b>        | <b>F</b>               |
| <b>CUSHION BRILLIANT</b> | <b>8.81 X 6.67 X 4.51 MM</b> | <b>VVS 2</b>              | <b>67.6%</b>           |
| Carat Weight             | Color Grade                  | Clarity Grade             | Table                  |
| Depth                    | Graile                       | Medium To Thick (Faceted) | Pointed                |
| Polish                   | Symmetry                     | Fluorescence              | Inscription(s)         |
| <b>EXCELLENT</b>         | <b>EXCELLENT</b>             | <b>NONE</b>               | <b>IGI LG653416957</b> |

Comments: This Laboratory Grown Diamond was created by Chemical Vapor Deposition (CVD) growth process. Type IIa

September 21, 2024  
IGI Report Number **LG653416957**  
Description **LABORATORY GROWN DIAMOND**  
Shape and Cutting Style **CUSHION BRILLIANT**  
Measurements **8.81 X 6.67 X 4.51 MM**

**GRADING RESULTS**

Carat Weight **2.11 CARATS**

Color Grade **F**

Clarity Grade **VVS 2**

**ADDITIONAL GRADING INFORMATION**

Polish **EXCELLENT**

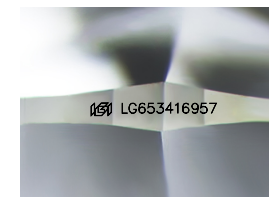
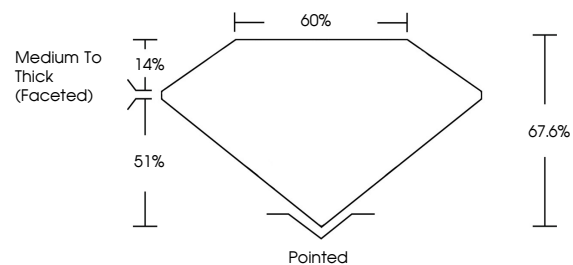
Symmetry **EXCELLENT**

Fluorescence **NONE**

Inscription(s) **IGI LG653416957**

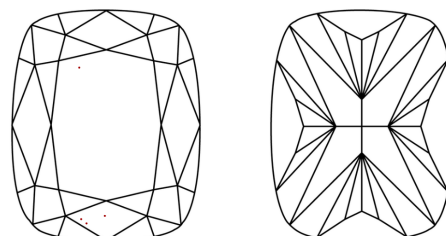
Comments: This Laboratory Grown Diamond was created by Chemical Vapor Deposition (CVD) growth process. Type IIa

**PROPORTIONS**



Sample Image Used

**CLARITY CHARACTERISTICS**



**KEY TO SYMBOLS**

Red symbols indicate internal characteristics.  
Green symbols indicate external characteristics.

**COLOR**

D E F G H I J Faint Very Light Light

**CLARITY**

|                     |                             |                        |                   |                  |
|---------------------|-----------------------------|------------------------|-------------------|------------------|
| IF                  | VS <sup>1-2</sup>           | VS <sup>1-2</sup>      | SI <sup>1-2</sup> | I <sup>1-3</sup> |
| Internally Flawless | Very Very Slightly Included | Very Slightly Included | Slightly Included | Included         |