



ELECTRONIC COPY

LG653417026
Report verification at igi.org



September 23, 2024

IGI Report Number **LG653417026**

Description **LABORATORY GROWN DIAMOND**

Shape and Cutting Style **CUT CORNERED SQUARE
MODIFIED BRILLIANT**

Measurements **5.48 X 5.21 X 3.52 MM**

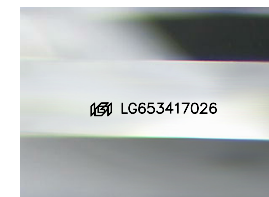
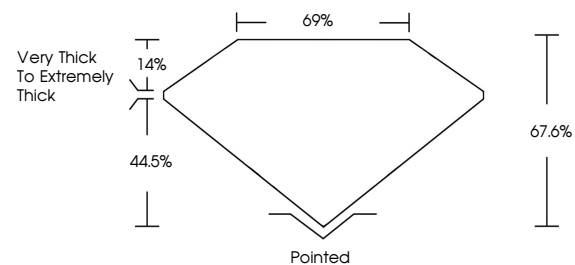
GRADING RESULTS

Carat Weight **1.00 CARAT**

Color Grade **E**

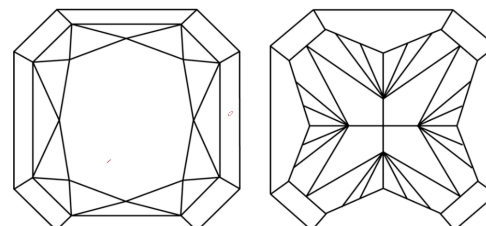
Clarity Grade **VVS 2**

PROPORTIONS



Sample Image Used

CLARITY CHARACTERISTICS



KEY TO SYMBOLS

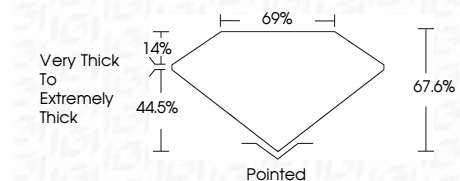
Red symbols indicate internal characteristics.
Green symbols indicate external characteristics.

COLOR

D E F G H I J Faint Very Light Light

CLARITY

IF	VS ¹⁻²	VS ¹⁻²	SI ¹⁻²	I ¹⁻³
Internally Flawless	Very Very Slightly Included	Very Slightly Included	Slightly Included	Included



ADDITIONAL GRADING INFORMATION

Polish **EXCELLENT**

Symmetry **EXCELLENT**

Fluorescence **NONE**

Inscription(s) **IGI LG653417026**

Comments: This Laboratory Grown Diamond was created by Chemical Vapor Deposition (CVD) growth process.
Type IIa



IGI



September 23, 2024
IGI Report No. LG653417026
CUT CORNERED SQUARE MODIFIED BRILLIANT
5.48 X 5.21 X 3.52 MM
Carat Weight **1.00 CARAT**
Color Grade **E**
Clarity Grade **VVS 2**
Depth **67.6%**
Table **69%**
Girdle **Very Thick to Extremely Thick**
Culet **Pointed**
Polish **EXCELLENT**
Symmetry **EXCELLENT**
Fluorescence **NONE**
Inscription(s) **IGI LG653417026**
Comments: This Laboratory Grown Diamond was created by Chemical Vapor Deposition (CVD) growth process.
Type IIa