



**INTERNATIONAL  
GEMOLOGICAL  
INSTITUTE**

**ELECTRONIC COPY**

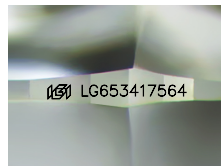
**LG653417564**



September 23, 2024  
**IGI Report Number** LG653417564  
**CUSHION MODIFIED BRILLIANT**  
**LABORATORY GROWN DIAMOND**  
**6.25 X 4.95 X 3.19 MM**  
**Carat Weight** 0.78 CARAT  
**Color Grade** D  
**Clarity Grade** VVS 2  
**Polish** EXCELLENT  
**Symmetry** EXCELLENT  
**Fluorescence** NONE  
**Inscription(s)** IGI LG653417564

**LABORATORY GROWN DIAMOND REPORT**

September 23, 2024  
**IGI Report Number** LG653417564  
**Description** LABORATORY GROWN DIAMOND  
**Shape and Cutting Style** CUSHION MODIFIED BRILLIANT  
**Measurements** 6.25 X 4.95 X 3.19 MM



Sample Image Used

**Comments:** This Laboratory Grown Diamond was created by Chemical Vapor Deposition (CVD) growth process. Type IIa

**GRADING RESULTS**

**Carat Weight** 0.78 CARAT  
**Color Grade** D  
**Clarity Grade** VVS 2

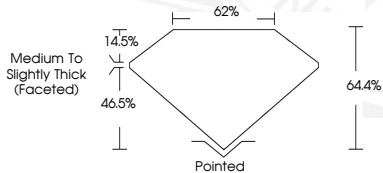
**ADDITIONAL GRADING INFORMATION**

**Polish** EXCELLENT  
**Symmetry** EXCELLENT  
**Fluorescence** NONE  
**Inscription(s)** IGI LG653417564

**Comments:** This Laboratory Grown Diamond was created by Chemical Vapor Deposition (CVD) growth process. Type IIa



September 23, 2024  
**IGI Report Number** LG653417564  
**CUSHION MODIFIED BRILLIANT**  
**LABORATORY GROWN DIAMOND**  
**6.25 X 4.95 X 3.19 MM**  
**Carat Weight** 0.78 CARAT  
**Color Grade** D  
**Clarity Grade** VVS 2  
**Polish** EXCELLENT  
**Symmetry** EXCELLENT  
**Fluorescence** NONE  
**Inscription(s)** IGI LG653417564



**Comments:** This Laboratory Grown Diamond was created by Chemical Vapor Deposition (CVD) growth process. Type IIa

THIS DOCUMENT WAS PRODUCED WITH THE FOLLOWING SECURITY MEASURES: SPECIAL DOCUMENT PAPER, INK SCREENS, WATERMARK, BACKGROUND DESIGN, HOLOGRAM AND OTHER SECURITY FEATURES NOT LISTED AND DO EXCEED DOCUMENT SECURITY INDUSTRY GUIDELINES.

For terms & conditions and to verify this report, please visit [www.igi.org](http://www.igi.org)