



ELECTRONIC COPY

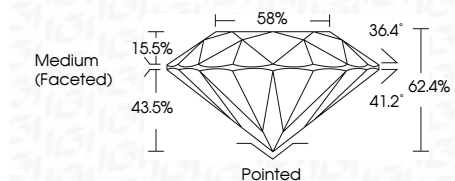
LG653417993
Report verification at igi.org



September 20, 2024
IGI Report Number LG653417993
Description LABORATORY GROWN DIAMOND
Shape and Cutting Style ROUND BRILLIANT
Measurements 6.54 - 6.56 X 4.09 MM

GRADING RESULTS

Carat Weight 1.09 CARAT
Color Grade E
Clarity Grade SI 1
Cut Grade EXCELLENT

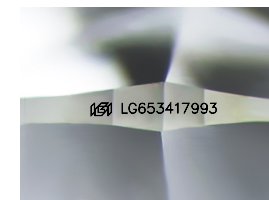


ADDITIONAL GRADING INFORMATION

Polish EXCELLENT
Symmetry EXCELLENT
Fluorescence NONE
Inscription(s) IGI LG653417993
Comments: This Laboratory Grown Diamond was created by Chemical Vapor Deposition (CVD) growth process. Type IIa

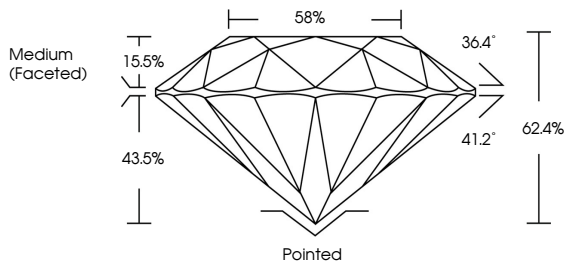


September 20, 2024
IGI Report No LG653417993
ROUND BRILLIANT
6.54 - 6.56 X 4.09 MM
1.09 CARAT E
SI 1 EXCELLENT 62.4% 58%
Medium (Faceted)
Pointed EXCELLENT EXCELLENT NONE
None IGI LG653417993
Comments: This Laboratory Grown Diamond was created by Chemical Vapor Deposition (CVD) growth process. Type IIa

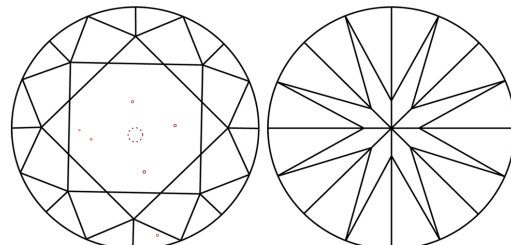


Sample Image Used

PROPORTIONS



CLARITY CHARACTERISTICS



KEY TO SYMBOLS

Red symbols indicate internal characteristics.
Green symbols indicate external characteristics.

COLOR

D E F G H I J Faint Very Light Light

CLARITY

IF VS 1-2 VS 1-2 SI 1-2 I 1-3
Internally Flawless Very Very Slightly Included Very Slightly Included Slightly Included Included

