



**ELECTRONIC COPY**

LG653418595  
Report verification at igi.org



September 21, 2024

IGI Report Number **LG653418595**

Description **LABORATORY GROWN DIAMOND**

Shape and Cutting Style **PRINCESS CUT**

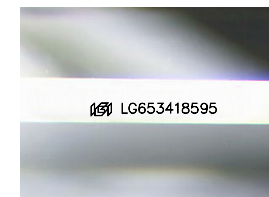
Measurements **8.72 X 8.52 X 6.10 MM**

**GRADING RESULTS**

Carat Weight **4.02 CARATS**

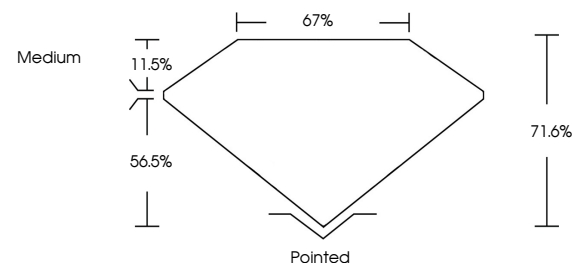
Color Grade **F**

Clarity Grade **VS 1**

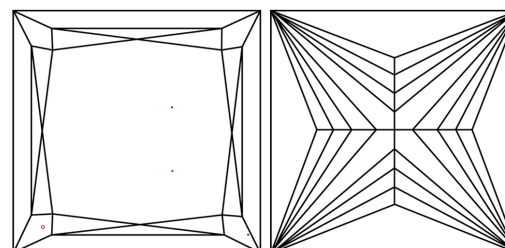


Sample Image Used

**PROPORTIONS**



**CLARITY CHARACTERISTICS**



**KEY TO SYMBOLS**

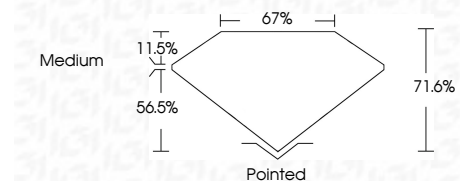
Red symbols indicate internal characteristics.  
Green symbols indicate external characteristics.

**COLOR**

D E F G H I J Faint Very Light Light

**CLARITY**

IF	VS <sup>1-2</sup>	VS <sup>1-2</sup>	SI <sup>1-2</sup>	I <sup>1-3</sup>
Internally Flawless	Very Very Slightly Included	Very Slightly Included	Slightly Included	Included



**ADDITIONAL GRADING INFORMATION**

Polish **EXCELLENT**

Symmetry **EXCELLENT**

Fluorescence **NONE**

Inscription(s) **IGI LG653418595**

Comments: This Laboratory Grown Diamond was created by Chemical Vapor Deposition (CVD) growth process.  
Type IIa



**IGI**



September 21, 2024  
IGI Report No. LG653418595  
**PRINCESS CUT**  
8.72 X 8.52 X 6.10 MM  
4.02 CARATS  
F  
Color Grade  
VS 1  
Clarity Grade  
71.6%  
67%  
Depth  
56.5%  
Medium  
Table  
Grades  
Pointed  
EXCELLENT  
EXCELLENT  
NONE  
IGI LG653418595  
Inscription(s)  
Comments: This Laboratory Grown Diamond was created by Chemical Vapor Deposition (CVD) growth process.  
Type IIa