



ELECTRONIC COPY

LG653418599
Report verification at igi.org



September 21, 2024

IGI Report Number **LG653418599**

Description **LABORATORY GROWN DIAMOND**

Shape and Cutting Style **CUSHION BRILLIANT**

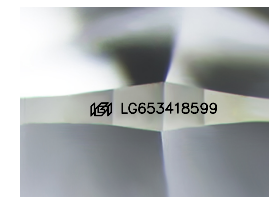
Measurements **12.23 X 8.90 X 5.98 MM**

GRADING RESULTS

Carat Weight **5.13 CARATS**

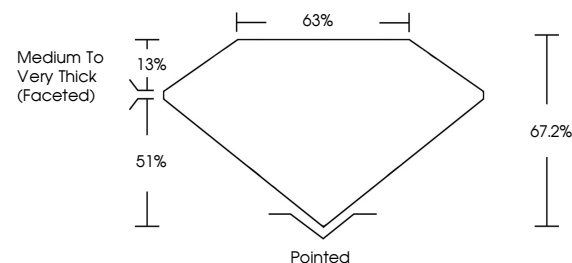
Color Grade **E**

Clarity Grade **VS 1**

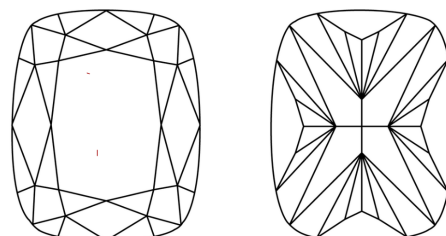


Sample Image Used

PROPORTIONS



CLARITY CHARACTERISTICS



KEY TO SYMBOLS

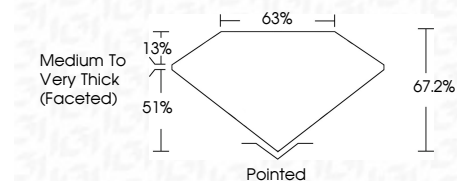
Red symbols indicate internal characteristics.
Green symbols indicate external characteristics.

COLOR

D E F G H I J Faint Very Light Light

CLARITY

IF	VS ¹⁻²	VS ¹⁻²	SI ¹⁻²	I ¹⁻³
Internally Flawless	Very Very Slightly Included	Very Slightly Included	Slightly Included	Included



ADDITIONAL GRADING INFORMATION

Polish **EXCELLENT**

Symmetry **EXCELLENT**

Fluorescence **NONE**

Inscription(s) **IGI LG653418599**

Comments: This Laboratory Grown Diamond was created by Chemical Vapor Deposition (CVD) growth process. Type IIa



IGI



September 21, 2024
IGI Report No LG653418599
CUSHION BRILLIANT

12.23 X 8.90 X 5.98 MM

5.13 CARATS
E

VS 1

67.2%
63%

Medium to Very Thick (Faceted)

Pointed
EXCELLENT
EXCELLENT
NONE
IGI LG653418599

Comments: This Laboratory Grown Diamond was created by Chemical Vapor Deposition (CVD) growth process. Type IIa