



ELECTRONIC COPY

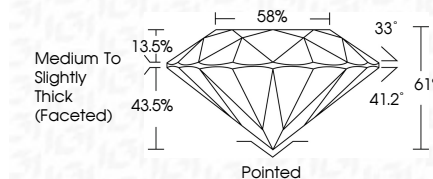
LG653418711
Report verification at igi.org



September 20, 2024
IGI Report Number LG653418711
Description LABORATORY GROWN DIAMOND
Shape and Cutting Style ROUND BRILLIANT
Measurements 6.46 - 6.49 X 3.95 MM

GRADING RESULTS

Carat Weight 1.02 CARAT
Color Grade D
Clarity Grade VVS 2
Cut Grade IDEAL



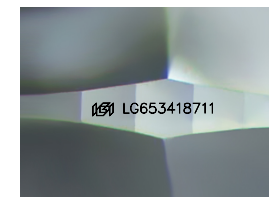
ADDITIONAL GRADING INFORMATION

Polish EXCELLENT
Symmetry EXCELLENT
Fluorescence NONE
Inscription(s) IGI LG653418711
Comments: This Laboratory Grown Diamond was created by Chemical Vapor Deposition (CVD) growth process. Type IIa



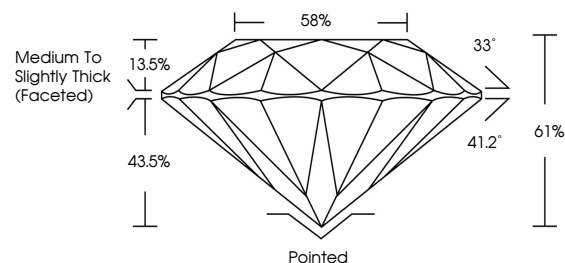
IGI

September 20, 2024
IGI Report No LG653418711
ROUND BRILLIANT
6.46 - 6.49 X 3.95 MM
1.02 CARAT
D
VVS 2
IDEAL
61%
58%
Medium To Slightly Thick (Faceted)
Pointed
EXCELLENT
EXCELLENT
NONE
IGI LG653418711
Comments: This Laboratory Grown Diamond was created by Chemical Vapor Deposition (CVD) growth process. Type IIa

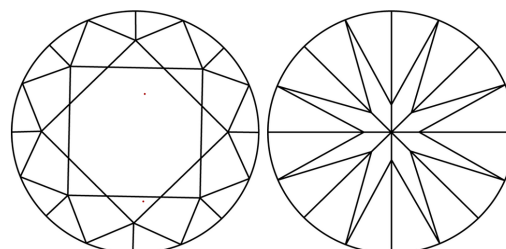


Sample Image Used

PROPORTIONS



CLARITY CHARACTERISTICS



KEY TO SYMBOLS

Red symbols indicate internal characteristics.
Green symbols indicate external characteristics.

COLOR

D E F G H I J Faint Very Light Light

CLARITY

IF VVS 1-2 VS 1-2 SI 1-2 I 1-3
Internally Flawless Very Very Slightly Included Very Slightly Included Slightly Included Included



September 20, 2024
IGI Report Number LG653418711
Description LABORATORY GROWN DIAMOND
Shape and Cutting Style ROUND BRILLIANT
Measurements 6.46 - 6.49 X 3.95 MM

GRADING RESULTS

Carat Weight 1.02 CARAT
Color Grade D
Clarity Grade VVS 2
Cut Grade IDEAL

ADDITIONAL GRADING INFORMATION

Polish EXCELLENT
Symmetry EXCELLENT
Fluorescence NONE
Inscription(s) IGI LG653418711

Comments: This Laboratory Grown Diamond was created by Chemical Vapor Deposition (CVD) growth process. Type IIa

Certified SUSTAINABILITY RATED DIAMOND. All certified diamonds come with an individual certificate, ONLY available at an accredited retailer. SCS GLOBAL SERVICES. FOR THE SUSTAINABILITY RATED CERTIFICATE, SCAN HERE -> [QR code]