



ELECTRONIC COPY

LG653418991
Report verification at igi.org



September 20, 2024

IGI Report Number LG653418991

Description LABORATORY GROWN DIAMOND

Shape and Cutting Style ROUND BRILLIANT

Measurements 8.16 - 8.20 X 4.85 MM

GRADING RESULTS

Carat Weight 2.00 CARATS

Color Grade E

Clarity Grade VS 1

Cut Grade EXCELLENT

September 20, 2024

IGI Report Number LG653418991

Description LABORATORY GROWN DIAMOND

Shape and Cutting Style ROUND BRILLIANT

Measurements 8.16 - 8.20 X 4.85 MM

GRADING RESULTS

Carat Weight 2.00 CARATS

Color Grade E

Clarity Grade VS 1

Cut Grade EXCELLENT

ADDITIONAL GRADING INFORMATION

Polish EXCELLENT

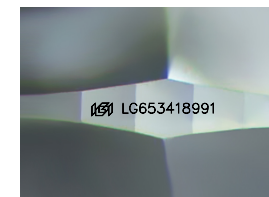
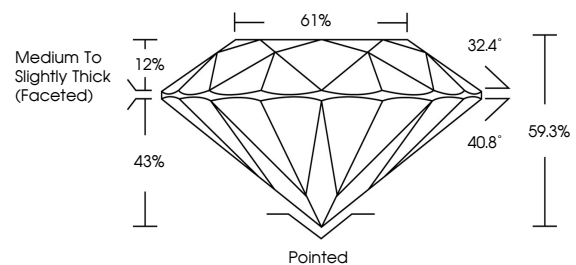
Symmetry EXCELLENT

Fluorescence NONE

Inscription(s) IGI LG653418991

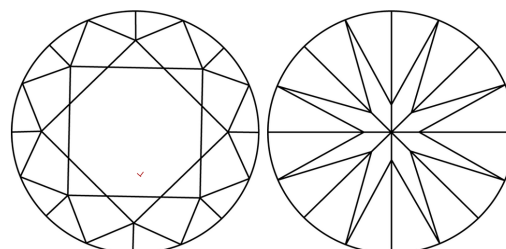
Comments: This Laboratory Grown Diamond was created by Chemical Vapor Deposition (CVD) growth process. Type IIa

PROPORTIONS



Sample Image Used

CLARITY CHARACTERISTICS



KEY TO SYMBOLS

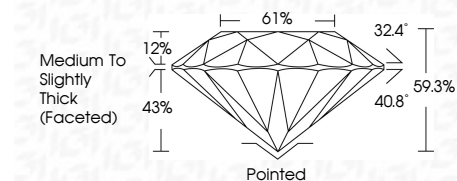
Red symbols indicate internal characteristics. Green symbols indicate external characteristics.

COLOR

D E F G H I J Faint Very Light Light

CLARITY

Table with columns for clarity grades: IF, VS 1-2, VS 1-2, SI 1-2, I 1-3. Rows for descriptions: Internally Flawless, Very Very Slightly Included, Very Slightly Included, Slightly Included, Included.



ADDITIONAL GRADING INFORMATION

Polish EXCELLENT

Symmetry EXCELLENT

Fluorescence NONE

Inscription(s) IGI LG653418991

Comments: This Laboratory Grown Diamond was created by Chemical Vapor Deposition (CVD) growth process. Type IIa



IGI



Summary of report details including date, report number, description, measurements, grading results (2.00 CARATS, E, VS 1, EXCELLENT), and additional information (EXCELLENT Polish/Symmetry, NONE Fluorescence, IGI LG653418991 inscription).