



**INTERNATIONAL  
GEMOLOGICAL  
INSTITUTE**

**ELECTRONIC COPY**

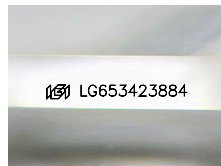
**LG653423884**



September 24, 2024  
IGI Report Number **LG653423884**  
**PRINCESS CUT**  
**LABORATORY GROWN DIAMOND**  
**5.40 X 5.33 X 3.69 MM**  
Carat Weight **0.95 CARAT**  
Color Grade **E**  
Clarity Grade **VVS 2**  
Polish **EXCELLENT**  
Symmetry **EXCELLENT**  
Fluorescence **NONE**  
Inscription(s) **IGI LG653423884**

**LABORATORY GROWN DIAMOND REPORT**

September 24, 2024  
IGI Report Number **LG653423884**  
Description **LABORATORY GROWN DIAMOND**  
Shape and Cutting Style **PRINCESS CUT**  
Measurements **5.40 X 5.33 X 3.69 MM**



Sample Image Used

Comments: This Laboratory Grown Diamond was created by Chemical Vapor Deposition (CVD) growth process. Type IIa

**GRADING RESULTS**

Carat Weight **0.95 CARAT**  
Color Grade **E**  
Clarity Grade **VVS 2**

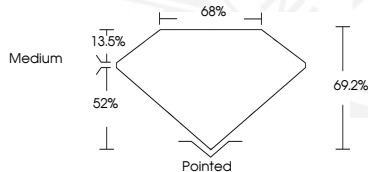
**ADDITIONAL GRADING INFORMATION**

Polish **EXCELLENT**  
Symmetry **EXCELLENT**  
Fluorescence **NONE**  
Inscription(s) **IGI LG653423884**

Comments: This Laboratory Grown Diamond was created by Chemical Vapor Deposition (CVD) growth process. Type IIa



September 24, 2024  
IGI Report Number **LG653423884**  
**PRINCESS CUT**  
**LABORATORY GROWN DIAMOND**  
**5.40 X 5.33 X 3.69 MM**  
Carat Weight **0.95 CARAT**  
Color Grade **E**  
Clarity Grade **VVS 2**  
Polish **EXCELLENT**  
Symmetry **EXCELLENT**  
Fluorescence **NONE**  
Inscription(s) **IGI LG653423884**



THIS DOCUMENT WAS PRODUCED WITH THE FOLLOWING SECURITY MEASURES: SPECIAL DOCUMENT PAPER, INK SCREENS, WATERMARK, BACKGROUND DESIGNS, HOLOGRAM AND OTHER SECURITY FEATURES NOT LISTED AND DO EXCEED DOCUMENT SECURITY INDUSTRY GUIDELINES.

For terms & conditions and to verify this report, please visit [www.igi.org](http://www.igi.org)