



**INTERNATIONAL
GEMOLOGICAL
INSTITUTE**

ELECTRONIC COPY

LG653424194

LABORATORY GROWN DIAMOND REPORT

September 21, 2024
 IGI Report Number **LG653424194**
 Description **LABORATORY GROWN DIAMOND**
 Shape and Cutting Style **ROUND BRILLIANT**
 Measurements **4.97 - 5.00 X 3.10 MM**

GRADING RESULTS

Carat Weight **0.47 CARAT**
 Color Grade **D**
 Clarity Grade **VVS 1**
 Cut Grade **IDEAL**

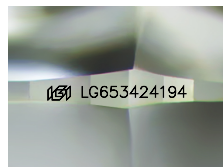
ADDITIONAL GRADING INFORMATION

Polish **EXCELLENT**
 Symmetry **EXCELLENT**
 Fluorescence **NONE**
 Inscription(s) **IGI LG653424194**

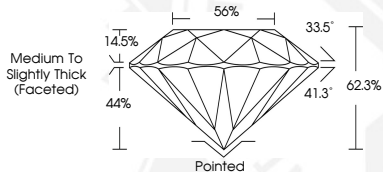
Comments: **HEARTS & ARROWS**
 This Laboratory Grown Diamond was created by Chemical Vapor
 Deposition (CVD) growth process.
 Type Iia



HEARTS & ARROWS



Sample Image Used



September 21, 2024
 IGI Report Number **LG653424194**
ROUND BRILLIANT
LABORATORY GROWN DIAMOND
4.97 - 5.00 X 3.10 MM
 Carat Weight **0.47 CARAT**
 Color Grade **D**
 Clarity Grade **VVS 1**
 Cut Grade **IDEAL**
 Polish **EXCELLENT**
 Symmetry **EXCELLENT**
 Fluorescence **NONE**
 Inscription(s) **IGI LG653424194**
 Comments: **HEARTS & ARROWS** This
 Laboratory Grown Diamond was
 created by Chemical Vapor
 Deposition (CVD) growth process.
 Type Iia



September 21, 2024
 IGI Report Number **LG653424194**
ROUND BRILLIANT
LABORATORY GROWN DIAMOND
4.97 - 5.00 X 3.10 MM
 Carat Weight **0.47 CARAT**
 Color Grade **D**
 Clarity Grade **VVS 1**
 Cut Grade **IDEAL**
 Polish **EXCELLENT**
 Symmetry **EXCELLENT**
 Fluorescence **NONE**
 Inscription(s) **IGI LG653424194**
 Comments: **HEARTS & ARROWS** This
 Laboratory Grown Diamond was
 created by Chemical Vapor
 Deposition (CVD) growth process.
 Type Iia

THIS DOCUMENT WAS PRODUCED WITH THE FOLLOWING SECURITY MEASURES: SPECIAL DOCUMENT PAPER, INK SCREENS, WATERMARK, BACKGROUND DESIGN, HOLOGRAM AND OTHER SECURITY FEATURES NOT LISTED AND DO EXCEED DOCUMENT SECURITY INDUSTRY GUIDELINES.

For terms & conditions and to verify this report, please visit www.igi.org