



ELECTRONIC COPY

LABORATORY GROWN DIAMOND REPORT

September 21, 2024
IGI Report Number LG653424530
Description LABORATORY GROWN DIAMOND
Shape and Cutting Style PRINCESS CUT
Measurements 8.58 X 8.37 X 5.88 MM

GRADING RESULTS

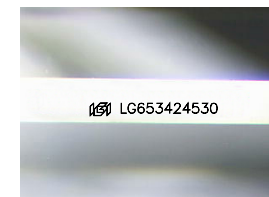
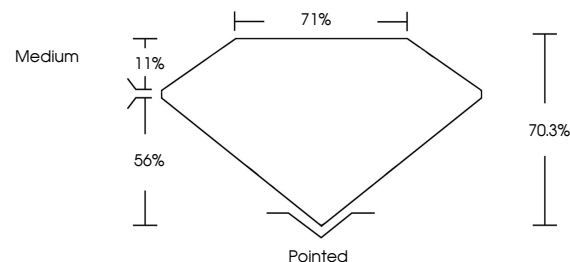
Carat Weight 3.76 CARATS
Color Grade E
Clarity Grade VS 1

ADDITIONAL GRADING INFORMATION

Polish EXCELLENT
Symmetry EXCELLENT
Fluorescence NONE
Inscription(s) IGI LG653424530

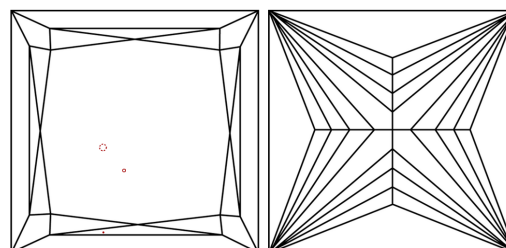
Comments: This Laboratory Grown Diamond was created by Chemical Vapor Deposition (CVD) growth process.
Type IIa

PROPORTIONS



Sample Image Used

CLARITY CHARACTERISTICS



KEY TO SYMBOLS

Red symbols indicate internal characteristics.
Green symbols indicate external characteristics.

COLOR

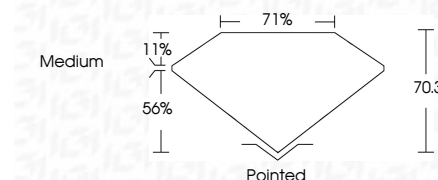
D E F G H I J Faint Very Light Light

CLARITY

IF VS 1-2 VS 1-2 SI 1-2 I 1-3
Internally Flawless Very Very Slightly Included Very Slightly Included Slightly Included Included



September 21, 2024
IGI Report Number LG653424530
Description LABORATORY GROWN DIAMOND
Shape and Cutting Style PRINCESS CUT
Measurements 8.58 X 8.37 X 5.88 MM
GRADING RESULTS
Carat Weight 3.76 CARATS
Color Grade E
Clarity Grade VS 1



ADDITIONAL GRADING INFORMATION

Polish EXCELLENT
Symmetry EXCELLENT
Fluorescence NONE
Inscription(s) IGI LG653424530
Comments: This Laboratory Grown Diamond was created by Chemical Vapor Deposition (CVD) growth process.
Type IIa



IGI



September 21, 2024
IGI Report No LG653424530
PRINCESS CUT
8.58 X 8.37 X 5.88 MM
3.76 CARATS
E
VS 1
70.3%
71%
Medium
Pointed
EXCELLENT
EXCELLENT
NONE
IGI LG653424530
Comments: This Laboratory Grown Diamond was created by Chemical Vapor Deposition (CVD) growth process.
Type IIa