



ELECTRONIC COPY

LG653424559
Report verification at igi.org



September 23, 2024

IGI Report Number **LG653424559**

Description **LABORATORY GROWN DIAMOND**

Shape and Cutting Style **PRINCESS CUT**

Measurements **8.16 X 7.97 X 5.36 MM**

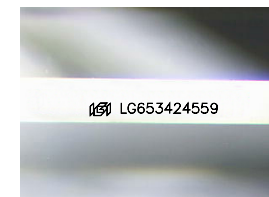
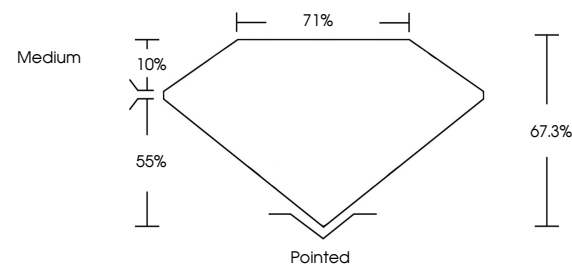
GRADING RESULTS

Carat Weight **3.06 CARATS**

Color Grade **F**

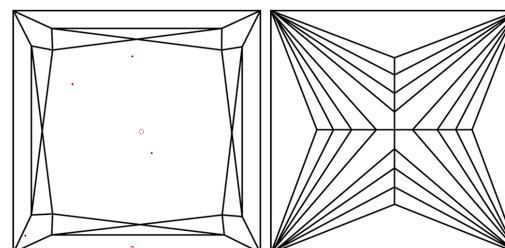
Clarity Grade **VS 1**

PROPORTIONS



Sample Image Used

CLARITY CHARACTERISTICS



KEY TO SYMBOLS

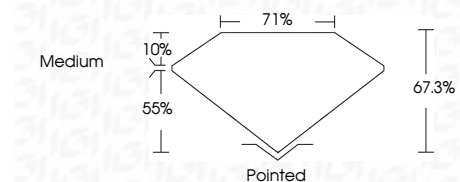
Red symbols indicate internal characteristics.
Green symbols indicate external characteristics.

COLOR

D E F G H I J Faint Very Light Light

CLARITY

IF	VS ¹⁻²	VS ¹⁻²	SI ¹⁻²	I ¹⁻³
Internally Flawless	Very Very Slightly Included	Very Slightly Included	Slightly Included	Included



ADDITIONAL GRADING INFORMATION

Polish **EXCELLENT**

Symmetry **EXCELLENT**

Fluorescence **NONE**

Inscription(s) **IGI LG653424559**

Comments: This Laboratory Grown Diamond was created by Chemical Vapor Deposition (CVD) growth process.
Type IIa



IGI



September 23, 2024
IGI Report No. LG653424559
PRINCESS CUT

3.06 CARATS
F

8.16 X 7.97 X 5.36 MM

Carat Weight
Color Grade
Clarity Grade
Depth
Table
Girdle

3.06 CARATS
F
VS 1
67.3%
71%
Medium

Pointed
EXCELLENT
EXCELLENT
NONE
IGI LG653424559

Culet
Polish
Symmetry
Fluorescence
Inscription(s)

Comments: This Laboratory Grown Diamond was created by Chemical Vapor Deposition (CVD) growth process.
Type IIa