



ELECTRONIC COPY

LABORATORY GROWN DIAMOND REPORT

September 23, 2024
IGI Report Number LG653425817
Description LABORATORY GROWN DIAMOND
Shape and Cutting Style PRINCESS CUT
Measurements 6.05 X 5.97 X 4.17 MM

GRADING RESULTS

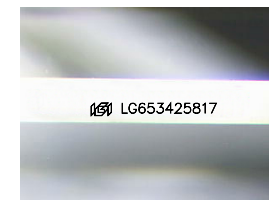
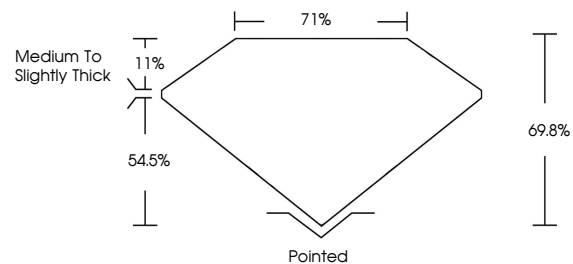
Carat Weight 1.31 CARAT
Color Grade D
Clarity Grade VS 1

ADDITIONAL GRADING INFORMATION

Polish VERY GOOD
Symmetry EXCELLENT
Fluorescence NONE
Inscription(s) IGI LG653425817

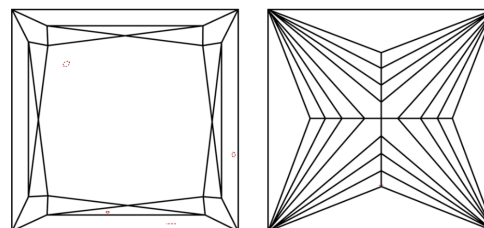
Comments: This Laboratory Grown Diamond was created by Chemical Vapor Deposition (CVD) growth process.
Type IIa

PROPORTIONS



Sample Image Used

CLARITY CHARACTERISTICS



KEY TO SYMBOLS

Red symbols indicate internal characteristics.
Green symbols indicate external characteristics.

COLOR

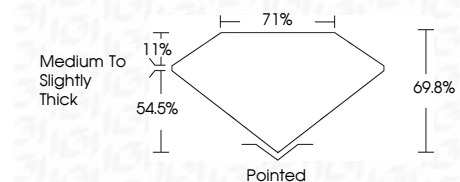
D E F G H I J Faint Very Light Light

CLARITY

IF	VS ¹⁻²	VS ¹⁻²	SI ¹⁻²	I ¹⁻³
Internally Flawless	Very Very Slightly Included	Very Slightly Included	Slightly Included	Included



September 23, 2024
IGI Report Number LG653425817
Description LABORATORY GROWN DIAMOND
Shape and Cutting Style PRINCESS CUT
Measurements 6.05 X 5.97 X 4.17 MM
GRADING RESULTS
Carat Weight 1.31 CARAT
Color Grade D
Clarity Grade VS 1



ADDITIONAL GRADING INFORMATION

Polish VERY GOOD
Symmetry EXCELLENT
Fluorescence NONE
Inscription(s) IGI LG653425817
Comments: This Laboratory Grown Diamond was created by Chemical Vapor Deposition (CVD) growth process.
Type IIa



IGI



September 23, 2024
IGI Report No. LG653425817
PRINCESS CUT
6.05 X 5.97 X 4.17 MM
1.31 CARAT
D
VS 1
6.05
54.5%
71%
Medium to Slightly Thick
Pointed
VERY GOOD
EXCELLENT
NONE
IGI LG653425817
Comments: This Laboratory Grown Diamond was created by Chemical Vapor Deposition (CVD) growth process.
Type IIa