



**ELECTRONIC COPY**

LG653426921  
Report verification at igi.org



September 23, 2024

IGI Report Number **LG653426921**

Description **LABORATORY GROWN DIAMOND**

Shape and Cutting Style **CUSHION BRILLIANT**

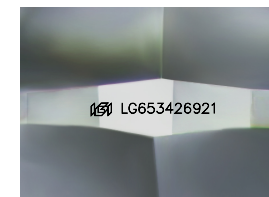
Measurements **12.23 X 8.92 X 5.90 MM**

**GRADING RESULTS**

Carat Weight **5.13 CARATS**

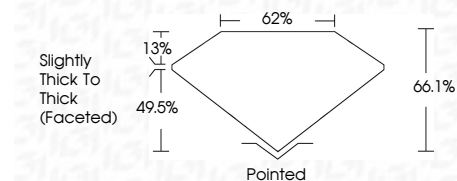
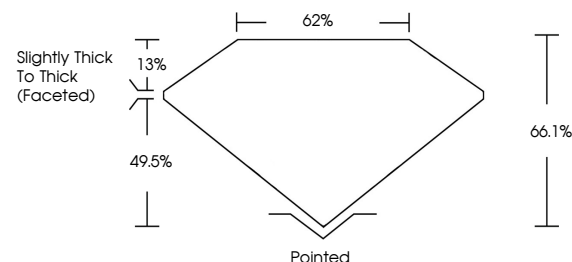
Color Grade **F**

Clarity Grade **VVS 2**

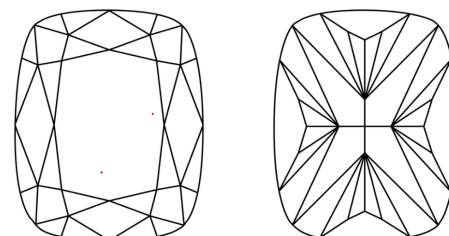


Sample Image Used

**PROPORTIONS**



**CLARITY CHARACTERISTICS**



**KEY TO SYMBOLS**

Red symbols indicate internal characteristics.  
Green symbols indicate external characteristics.

**COLOR**

D E F G H I J Faint Very Light Light

**CLARITY**

IF	VS <sup>1-2</sup>	VS <sup>1-2</sup>	SI <sup>1-2</sup>	I <sup>1-3</sup>
Internally Flawless	Very Very Slightly Included	Very Slightly Included	Slightly Included	Included

**ADDITIONAL GRADING INFORMATION**

Polish **EXCELLENT**

Symmetry **EXCELLENT**

Fluorescence **NONE**

Inscription(s) **IGI LG653426921**

Comments: This Laboratory Grown Diamond was created by Chemical Vapor Deposition (CVD) growth process. Type IIa



**IGI**



September 23, 2024  
IGI Report No LG653426921  
CUSHION BRILLIANT

5.13 CARATS  
F

12.23 X 8.92 X 5.90 MM

Carat Weight  
Color Grade  
Clarity Grade  
Table  
Girdle  
Slightly Thick To Thick (Faceted)

VVS 2  
66.1%  
62%

Pointed  
EXCELLENT  
EXCELLENT  
NONE  
IGI LG653426921

Culet  
Polish  
Symmetry  
Fluorescence  
Inscription(s)

Comments: This Laboratory Grown Diamond was created by Chemical Vapor Deposition (CVD) growth process. Type IIa