



ELECTRONIC COPY

LG653433147
Report verification at igi.org



September 23, 2024

IGI Report Number **LG653433147**

Description **LABORATORY GROWN DIAMOND**

Shape and Cutting Style **PRINCESS CUT**

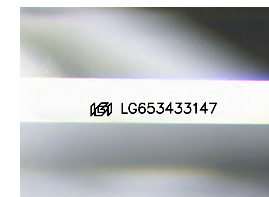
Measurements **5.36 X 5.29 X 3.87 MM**

GRADING RESULTS

Carat Weight **1.00 CARAT**

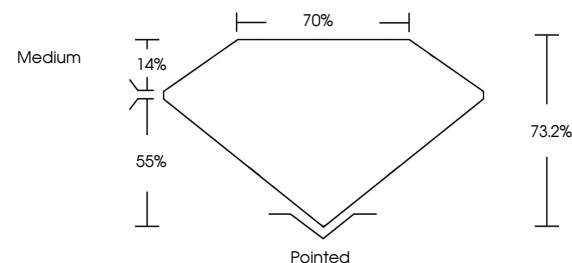
Color Grade **E**

Clarity Grade **VVS 2**

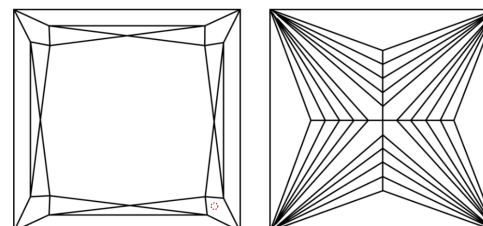


Sample Image Used

PROPORTIONS



CLARITY CHARACTERISTICS



KEY TO SYMBOLS

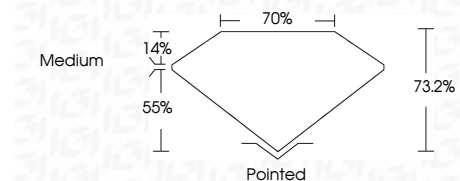
Red symbols indicate internal characteristics.
Green symbols indicate external characteristics.

COLOR

D E F G H I J Faint Very Light Light

CLARITY

IF	VS ¹⁻²	VS ¹⁻²	SI ¹⁻²	I ¹⁻³
Internally Flawless	Very Very Slightly Included	Very Slightly Included	Slightly Included	Included



ADDITIONAL GRADING INFORMATION

Polish **EXCELLENT**

Symmetry **EXCELLENT**

Fluorescence **NONE**

Inscription(s) **IGI LG653433147**

Comments: As Grown - No indication of post-growth treatment.

This Laboratory Grown Diamond was created by High Pressure High Temperature (HPHT) growth process.

Type II



IGI

September 23, 2024	1.00 CARAT	E	VVS 2	73.2%	70%	Medium	Pointed
IGI Report No. LG653433147	5.36 X 5.29 X 3.87 MM	Color Grade	Depth	Table	Graile	Culet	Polish
PRINCESS CUT							EXCELLENT
							EXCELLENT
							NONE
							IGI LG653433147

Comments: As Grown - No indication of post-growth treatment.
This Laboratory Grown Diamond was created by High Pressure High Temperature (HPHT) growth process.
Type II