



**ELECTRONIC COPY**

LG653433290  
Report verification at igi.org



September 22, 2024

IGI Report Number **LG653433290**

Description **LABORATORY GROWN DIAMOND**

Shape and Cutting Style **EMERALD CUT**

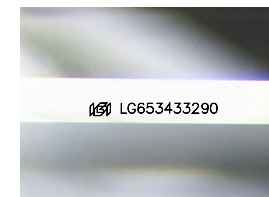
Measurements **11.59 X 8.15 X 5.26 MM**

**GRADING RESULTS**

Carat Weight **5.03 CARATS**

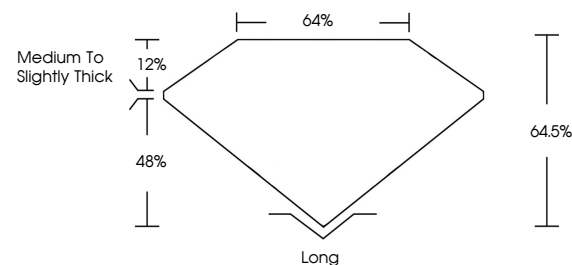
Color Grade **G**

Clarity Grade **VS 1**

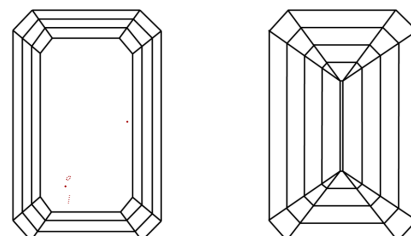


Sample Image Used

**PROPORTIONS**



**CLARITY CHARACTERISTICS**



**KEY TO SYMBOLS**

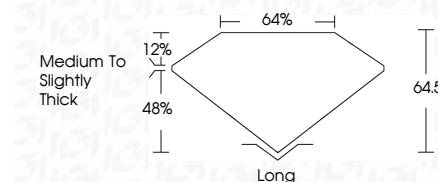
Red symbols indicate internal characteristics.  
Green symbols indicate external characteristics.

**COLOR**

D E F G H I J Faint Very Light Light

**CLARITY**

IF	VS <sup>1-2</sup>	VS <sup>1-2</sup>	SI <sup>1-2</sup>	I <sup>1-3</sup>
Internally Flawless	Very Very Slightly Included	Very Slightly Included	Slightly Included	Included



**ADDITIONAL GRADING INFORMATION**

Polish **EXCELLENT**

Symmetry **EXCELLENT**

Fluorescence **NONE**

Inscription(s) **IGI LG653433290**

Comments: This Laboratory Grown Diamond was created by Chemical Vapor Deposition (CVD) growth process. Type IIa



**IGI**

September 22, 2024  
IGI Report No. LG653433290  
**EMERALD CUT**

**5.03 CARATS**  
Color Grade **G**  
Clarity Grade **VS 1**  
Table **64.5%**  
Girdle **48%**  
Crown **12%**  
Total Depth **64.5%**  
Girdle **Medium to Slightly Thick**  
Length **Long**  
Polish **EXCELLENT**  
Symmetry **EXCELLENT**  
Fluorescence **NONE**  
Inscription(s) **IGI LG653433290**

Comments: This Laboratory Grown Diamond was created by Chemical Vapor Deposition (CVD) growth process. Type IIa