



ELECTRONIC COPY

LG653434293
Report verification at igi.org

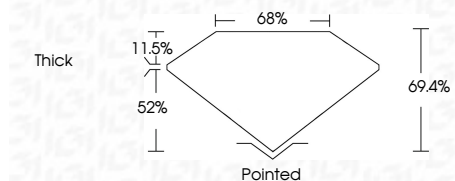


September 28, 2024
IGI Report Number LG653434293
Description LABORATORY GROWN DIAMOND
Shape and Cutting Style CUT CORNERED RECTANGULAR MODIFIED BRILLIANT

Measurements 11.72 X 8.37 X 5.81 MM

GRADING RESULTS

Carat Weight 5.04 CARATS
Color Grade E
Clarity Grade VS 1



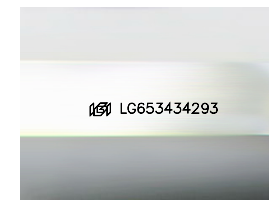
ADDITIONAL GRADING INFORMATION

Polish EXCELLENT
Symmetry EXCELLENT
Fluorescence NONE
Inscription(s) IGI LG653434293
Comments: This Laboratory Grown Diamond was created by Chemical Vapor Deposition (CVD) growth process. Type IIa



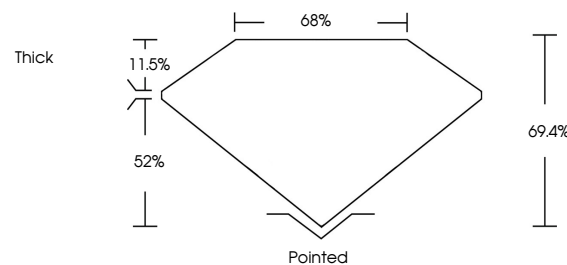
IGI

September 28, 2024
IGI Report No. LG653434293
CUT CORNERED RECT. MODIFIED BRILLIANT
5.04 CARATS E
11.72 X 8.37 X 5.81 MM
Color Grade E
Clarity Grade VS 1
Depth 69.4%
Table 65%
Girdle Thick
Culet Pointed
Polish EXCELLENT
Symmetry EXCELLENT
Fluorescence NONE
Inscription(s) IGI LG653434293
Comments: This Laboratory Grown Diamond was created by Chemical Vapor Deposition (CVD) growth process. Type IIa

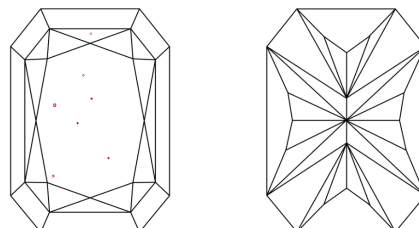


Sample Image Used

PROPORTIONS



CLARITY CHARACTERISTICS



KEY TO SYMBOLS

Red symbols indicate internal characteristics.
Green symbols indicate external characteristics.

COLOR

D E F G H I J Faint Very Light Light

CLARITY

IF VS 1-2 VS 1-2 SI 1-2 I 1-3
Internally Flawless Very Very Slightly Included Very Slightly Included Slightly Included Included

