



**INTERNATIONAL  
GEMOLOGICAL  
INSTITUTE**

**ELECTRONIC COPY**

**LG653434691**



**September 21, 2024**  
**IGI Report Number LG653434691**  
**ROUND BRILLIANT**  
**LABORATORY GROWN DIAMOND**  
**5.42 - 5.44 X 3.32 MM**  
 Carat Weight **0.60 CARAT**  
 Color Grade **E**  
 Clarity Grade **VVS 1**  
 Cut Grade **IDEAL**  
 Polish **EXCELLENT**  
 Symmetry **EXCELLENT**  
 Fluorescence **NONE**  
 Inscription(s) **IGI LG653434691**

**LABORATORY GROWN DIAMOND REPORT**

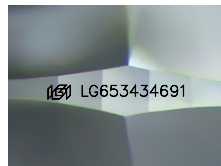
September 21, 2024  
 IGI Report Number **LG653434691**  
 Description **LABORATORY GROWN DIAMOND**  
 Shape and Cutting Style **ROUND BRILLIANT**  
 Measurements **5.42 - 5.44 X 3.32 MM**



**HEARTS & ARROWS**

**GRADING RESULTS**

Carat Weight **0.60 CARAT**  
 Color Grade **E**  
 Clarity Grade **VVS 1**  
 Cut Grade **IDEAL**

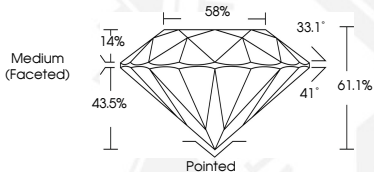


Sample Image Used

**ADDITIONAL GRADING INFORMATION**

Polish **EXCELLENT**  
 Symmetry **EXCELLENT**  
 Fluorescence **NONE**  
 Inscription(s) **IGI LG653434691**

Comments: **HEARTS & ARROWS**  
 As Grown - No indication of post-growth treatment.  
 This Laboratory Grown Diamond was created by High Pressure High Temperature (HPHT) growth process.  
 Type II



**September 21, 2024**  
**IGI Report Number LG653434691**  
**ROUND BRILLIANT**  
**LABORATORY GROWN DIAMOND**  
**5.42 - 5.44 X 3.32 MM**  
 Carat Weight **0.60 CARAT**  
 Color Grade **E**  
 Clarity Grade **VVS 1**  
 Cut Grade **IDEAL**  
 Polish **EXCELLENT**  
 Symmetry **EXCELLENT**  
 Fluorescence **NONE**  
 Inscription(s) **IGI LG653434691**  
 Comments: **HEARTS & ARROWS** As Grown - No indication of post-growth treatment. This Laboratory Grown Diamond was created by High Pressure High Temperature (HPHT) growth process. Type II

THIS DOCUMENT WAS PRODUCED WITH THE FOLLOWING SECURITY MEASURES: SPECIAL DOCUMENT PAPER, INK SCREENS, WATERMARK, BACKGROUND DESIGNS, HOLOGRAM AND OTHER SECURITY FEATURES NOT LISTED AND DO EXCEED DOCUMENT SECURITY INDUSTRY GUIDELINES.

For terms & conditions and to verify this report, please visit [www.igi.org](http://www.igi.org)