



ELECTRONIC COPY

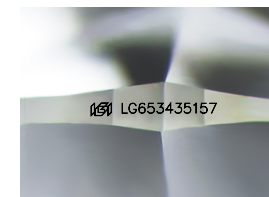
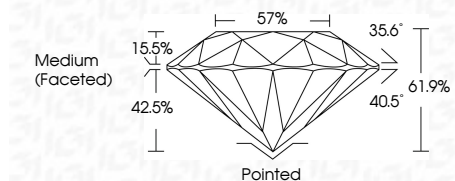
LG653435157
Report verification at igi.org



September 23, 2024
IGI Report Number LG653435157
Description LABORATORY GROWN DIAMOND
Shape and Cutting Style ROUND BRILLIANT
Measurements 6.39 - 6.42 X 3.96 MM

GRADING RESULTS

Carat Weight 1.00 CARAT
Color Grade D
Clarity Grade VS 1
Cut Grade IDEAL



Sample Image Used

ADDITIONAL GRADING INFORMATION

Polish EXCELLENT
Symmetry EXCELLENT
Fluorescence NONE
Inscription(s) IGI LG653435157
Comments: This Laboratory Grown Diamond was created by Chemical Vapor Deposition (CVD) growth process. Type IIa



September 23, 2024
IGI Report No LG653435157
ROUND BRILLIANT
6.39 - 6.42 X 3.96 MM
1.00 CARAT D
VS 1 IDEAL
61.9% 57%
Medium (Faceted)
Pointed EXCELLENT EXCELLENT NONE
IGI LG653435157
Comments: This Laboratory Grown Diamond was created by Chemical Vapor Deposition (CVD) growth process. Type IIa

September 23, 2024
IGI Report Number LG653435157
Description LABORATORY GROWN DIAMOND
Shape and Cutting Style ROUND BRILLIANT
Measurements 6.39 - 6.42 X 3.96 MM

GRADING RESULTS

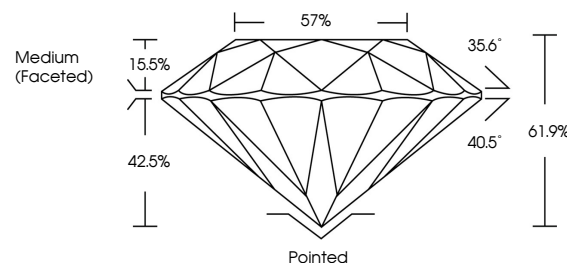
Carat Weight 1.00 CARAT
Color Grade D
Clarity Grade VS 1
Cut Grade IDEAL

ADDITIONAL GRADING INFORMATION

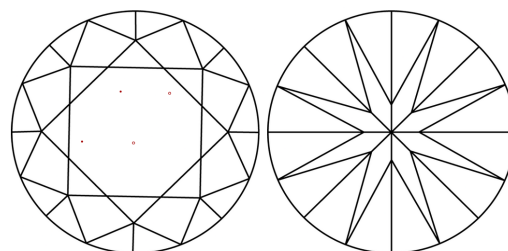
Polish EXCELLENT
Symmetry EXCELLENT
Fluorescence NONE
Inscription(s) IGI LG653435157

Comments: This Laboratory Grown Diamond was created by Chemical Vapor Deposition (CVD) growth process. Type IIa

PROPORTIONS



CLARITY CHARACTERISTICS



KEY TO SYMBOLS

Red symbols indicate internal characteristics.
Green symbols indicate external characteristics.

COLOR

D E F G H I J Faint Very Light Light

CLARITY

IF VS 1-2 VS 1-2 SI 1-2 I 1-3
Internally Flawless Very Very Slightly Included Very Slightly Included Slightly Included Included

