



ELECTRONIC COPY

LG653435919
Report verification at igi.org



September 21, 2024

IGI Report Number **LG653435919**

Description **LABORATORY GROWN DIAMOND**

Shape and Cutting Style **PRINCESS CUT**

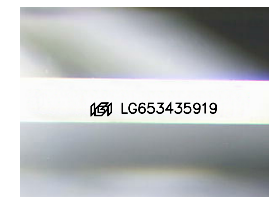
Measurements **5.61 X 5.53 X 3.87 MM**

GRADING RESULTS

Carat Weight **1.07 CARAT**

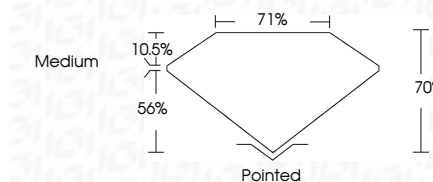
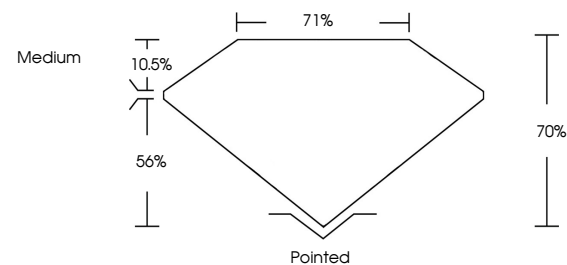
Color Grade **E**

Clarity Grade **SI 1**

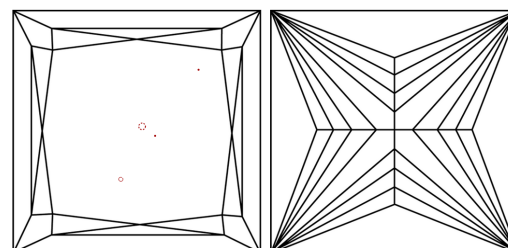


Sample Image Used

PROPORTIONS



CLARITY CHARACTERISTICS



KEY TO SYMBOLS

Red symbols indicate internal characteristics.
Green symbols indicate external characteristics.

COLOR

D E F G H I J Faint Very Light Light

CLARITY

IF	VS ¹⁻²	VS ¹⁻²	SI ¹⁻²	I ¹⁻³
Internally Flawless	Very Very Slightly Included	Very Slightly Included	Slightly Included	Included

ADDITIONAL GRADING INFORMATION

Polish **EXCELLENT**

Symmetry **EXCELLENT**

Fluorescence **NONE**

Inscription(s) **IGI LG653435919**

Comments: This Laboratory Grown Diamond was created by Chemical Vapor Deposition (CVD) growth process.
Type IIa



IGI



September 21, 2024
IGI Report No LG653435919
PRINCESS CUT
5.61 X 5.53 X 3.87 MM
1.07 CARAT
E
SI 1
70%
71%
Medium
Pointed
EXCELLENT
EXCELLENT
NONE
IGI LG653435919
Comments: This Laboratory Grown Diamond was created by Chemical Vapor Deposition (CVD) growth process.
Type IIa