



ELECTRONIC COPY

LABORATORY GROWN DIAMOND REPORT

September 23, 2024
IGI Report Number LG653436090
Description LABORATORY GROWN DIAMOND
Shape and Cutting Style CUT CORNERED RECTANGULAR MODIFIED BRILLIANT
Measurements 10.85 X 7.80 X 5.24 MM

GRADING RESULTS

Carat Weight 3.92 CARATS
Color Grade E
Clarity Grade VS 1

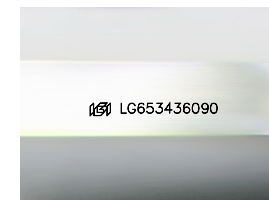
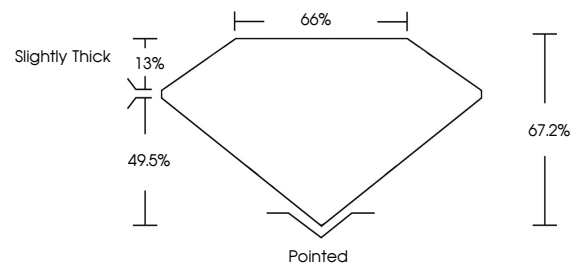
ADDITIONAL GRADING INFORMATION

Polish EXCELLENT
Symmetry EXCELLENT
Fluorescence NONE

Inscription(s) IGI LG653436090

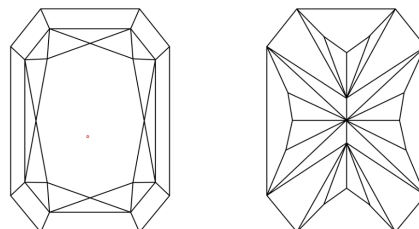
Comments: This Laboratory Grown Diamond was created by Chemical Vapor Deposition (CVD) growth process. Type IIa

PROPORTIONS



Sample Image Used

CLARITY CHARACTERISTICS



KEY TO SYMBOLS

Red symbols indicate internal characteristics. Green symbols indicate external characteristics.

COLOR

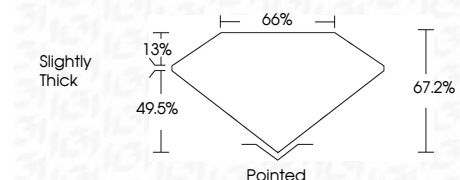
D E F G H I J Faint Very Light Light

CLARITY

Table mapping clarity grades (IF, VVS, VS, SI, I) to their descriptions (Internally Flawless, Very Very Slightly Included, etc.)



September 23, 2024
IGI Report Number LG653436090
Description LABORATORY GROWN DIAMOND
Shape and Cutting Style CUT CORNERED RECTANGULAR MODIFIED BRILLIANT
Measurements 10.85 X 7.80 X 5.24 MM
GRADING RESULTS
Carat Weight 3.92 CARATS
Color Grade E
Clarity Grade VS 1



ADDITIONAL GRADING INFORMATION

Polish EXCELLENT
Symmetry EXCELLENT
Fluorescence NONE
Inscription(s) IGI LG653436090

Comments: This Laboratory Grown Diamond was created by Chemical Vapor Deposition (CVD) growth process. Type IIa



IGI



September 23, 2024
IGI Report No. LG653436090
CUT CORNERED RECT. MODIFIED BRILLIANT
10.85 X 7.80 X 5.24 MM
3.92 CARATS
E
3.92 CARATS
E
VS 1
67.2%
66%
Slightly Thick
Pointed
EXCELLENT
EXCELLENT
NONE
IGI LG653436090

Comments: This Laboratory Grown Diamond was created by Chemical Vapor Deposition (CVD) growth process. Type IIa