



ELECTRONIC COPY

LG653438210
Report verification at igi.org



September 23, 2024

IGI Report Number LG653438210

Description LABORATORY GROWN DIAMOND

Shape and Cutting Style CUT CORNERED RECTANGULAR MODIFIED BRILLIANT

Measurements 15.33 X 10.52 X 7.20 MM

GRADING RESULTS

Carat Weight 10.28 CARATS

Color Grade F

Clarity Grade VS 1

September 23, 2024

IGI Report Number LG653438210

Description LABORATORY GROWN DIAMOND

Shape and Cutting Style CUT CORNERED RECTANGULAR MODIFIED BRILLIANT

Measurements 15.33 X 10.52 X 7.20 MM

GRADING RESULTS

Carat Weight 10.28 CARATS

Color Grade F

Clarity Grade VS 1

ADDITIONAL GRADING INFORMATION

Polish EXCELLENT

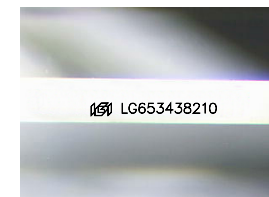
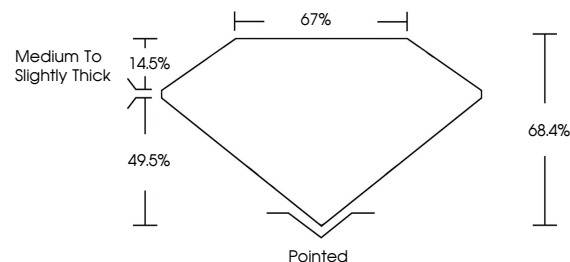
Symmetry EXCELLENT

Fluorescence NONE

Inscription(s) LG653438210

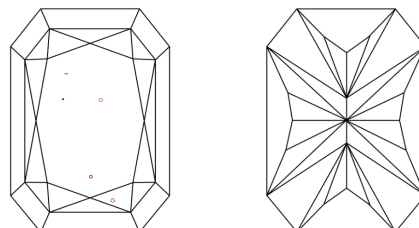
Comments: This Laboratory Grown Diamond was created by Chemical Vapor Deposition (CVD) growth process. Type IIa

PROPORTIONS



Sample Image Used

CLARITY CHARACTERISTICS



KEY TO SYMBOLS

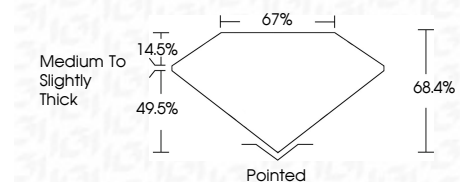
Red symbols indicate internal characteristics. Green symbols indicate external characteristics.

COLOR

D E F G H I J Faint Very Light Light

CLARITY

IF VS 1-2 VS 1-2 SI 1-2 I 1-3 Internally Flawless Very Very Slightly Included Very Slightly Included Slightly Included Included



ADDITIONAL GRADING INFORMATION

Polish EXCELLENT

Symmetry EXCELLENT

Fluorescence NONE

Inscription(s) LG653438210

Comments: This Laboratory Grown Diamond was created by Chemical Vapor Deposition (CVD) growth process. Type IIa



IGI



September 23, 2024
IGI Report No. LG653438210
CUT CORNERED RECT. MODIFIED BRILLIANT
15.33 X 10.52 X 7.20 MM
10.28 CARATS
F
VS 1
68.4%
67%
Medium to Slightly Thick
Pointed
EXCELLENT
EXCELLENT
NONE
LG653438210
Comments: This Laboratory Grown Diamond was created by Chemical Vapor Deposition (CVD) growth process. Type IIa