



ELECTRONIC COPY

LG653439592
Report verification at igi.org



September 23, 2024
IGI Report Number **LG653439592**
Description **LABORATORY GROWN DIAMOND**
Shape and Cutting Style **CUT CORNERED
RECTANGULAR MODIFIED
BRILLIANT**
Measurements **9.38 X 6.51 X 4.42 MM**
GRADING RESULTS
Carat Weight **2.31 CARATS**
Color Grade **D**
Clarity Grade **VVS 2**

September 23, 2024
IGI Report Number **LG653439592**
Description **LABORATORY GROWN DIAMOND**
Shape and Cutting Style **CUT CORNERED RECTANGULAR
MODIFIED BRILLIANT**
Measurements **9.38 X 6.51 X 4.42 MM**

GRADING RESULTS

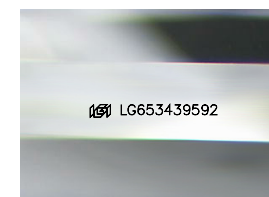
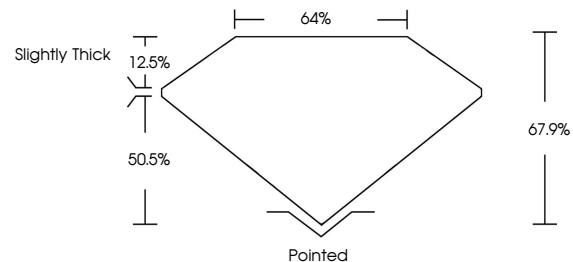
Carat Weight **2.31 CARATS**
Color Grade **D**
Clarity Grade **VVS 2**

ADDITIONAL GRADING INFORMATION

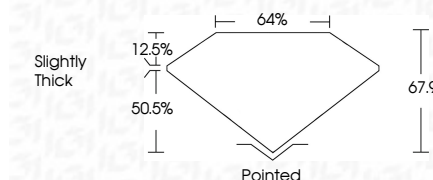
Polish **EXCELLENT**
Symmetry **EXCELLENT**
Fluorescence **NONE**
Inscription(s) **IGI LG653439592**

Comments: This Laboratory Grown Diamond was created by Chemical Vapor Deposition (CVD) growth process.
Type IIa

PROPORTIONS



Sample Image Used



COLOR

D E F G H I J Faint Very Light Light

CLARITY

IF	VS ¹⁻²	VS ¹⁻²	SI ¹⁻²	I ¹⁻³
Internally Flawless	Very Very Slightly Included	Very Slightly Included	Slightly Included	Included

ADDITIONAL GRADING INFORMATION

Polish **EXCELLENT**
Symmetry **EXCELLENT**
Fluorescence **NONE**
Inscription(s) **IGI LG653439592**
Comments: This Laboratory Grown Diamond was created by Chemical Vapor Deposition (CVD) growth process.
Type IIa



IGI



September 23, 2024
IGI Report No. LG653439592
CUT CORNERED RECT. MODIFIED BRILLIANT
9.38 X 6.51 X 4.42 MM
2.31 CARATS
D
VVS 2
67.9%
64%
Slightly Thick
Pointed
EXCELLENT
EXCELLENT
NONE
IGI LG653439592

Comments: This Laboratory Grown Diamond was created by Chemical Vapor Deposition (CVD) growth process.
Type IIa