



ELECTRONIC COPY

LG653440940
Report verification at igi.org



September 24, 2024

IGI Report Number **LG653440940**

Description **LABORATORY GROWN DIAMOND**

Shape and Cutting Style **EMERALD CUT**

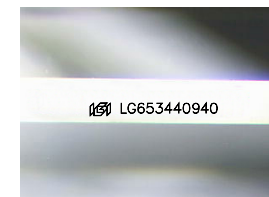
Measurements **6.73 X 4.80 X 3.13 MM**

GRADING RESULTS

Carat Weight **1.04 CARAT**

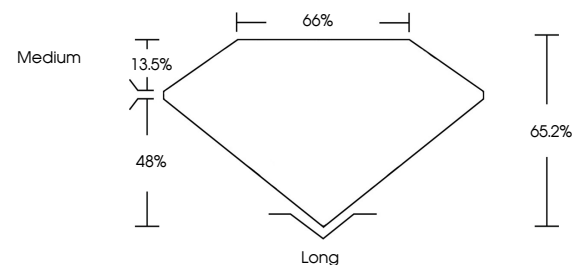
Color Grade **D**

Clarity Grade **VVS 1**

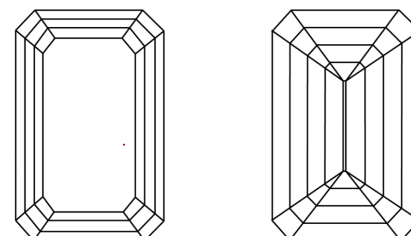


Sample Image Used

PROPORTIONS



CLARITY CHARACTERISTICS



KEY TO SYMBOLS

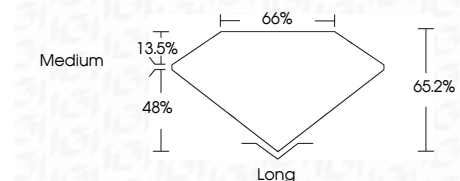
Red symbols indicate internal characteristics.
Green symbols indicate external characteristics.

COLOR

D E F G H I J Faint Very Light Light

CLARITY

| | | | | |
|---------------------|-----------------------------|------------------------|-------------------|------------------|
| IF | VS ¹⁻² | VS ¹⁻² | SI ¹⁻² | I ¹⁻³ |
| Internally Flawless | Very Very Slightly Included | Very Slightly Included | Slightly Included | Included |



ADDITIONAL GRADING INFORMATION

Polish **EXCELLENT**

Symmetry **EXCELLENT**

Fluorescence **NONE**

Inscription(s) **IGI LG653440940**

Comments: This Laboratory Grown Diamond was created by Chemical Vapor Deposition (CVD) growth process.
Type IIa



IGI



September 24, 2024
IGI Report No. LG653440940
EMERALD CUT

1.04 CARAT
D

6.73 X 4.80 X 3.13 MM
Color Grade **D**
Depth 48%
Table 13.5%
Girdle Medium

Clarity **VVS 1**
Polish **EXCELLENT**
Symmetry **EXCELLENT**
Fluorescence **NONE**
Inscription(s) **IGI LG653440940**

Comments: This Laboratory Grown Diamond was created by Chemical Vapor Deposition (CVD) growth process.
Type IIa