



ELECTRONIC COPY

LG653441571
Report verification at igi.org



September 25, 2024

IGI Report Number LG653441571

Description LABORATORY GROWN DIAMOND

Shape and Cutting Style ROUND BRILLIANT

Measurements 6.36 - 6.41 X 3.99 MM

GRADING RESULTS

Carat Weight 1.01 CARAT

Color Grade D

Clarity Grade INTERNALLY FLAWLESS

Cut Grade IDEAL

September 25, 2024
IGI Report Number LG653441571
Description LABORATORY GROWN DIAMOND
Shape and Cutting Style ROUND BRILLIANT
Measurements 6.36 - 6.41 X 3.99 MM

GRADING RESULTS

Carat Weight 1.01 CARAT

Color Grade D

Clarity Grade INTERNALLY FLAWLESS

Cut Grade IDEAL

ADDITIONAL GRADING INFORMATION

Polish EXCELLENT

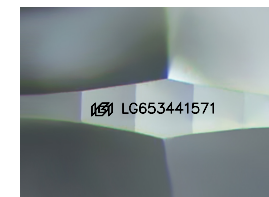
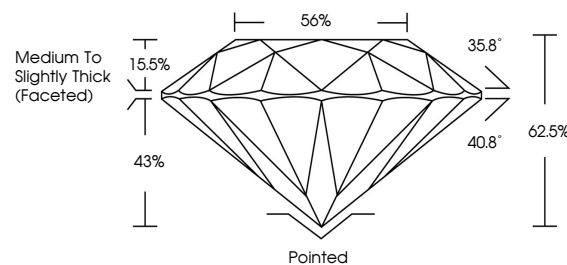
Symmetry EXCELLENT

Fluorescence NONE

Inscription(s) IGI LG653441571

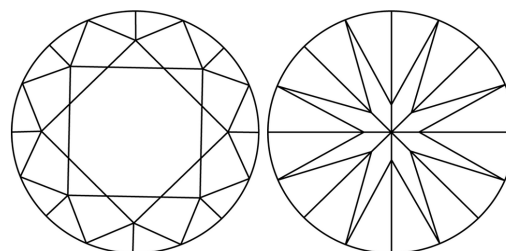
Comments: As Grown - No indication of post-growth treatment. This Laboratory Grown Diamond was created by High Pressure High Temperature (HPHT) growth process. Type II

PROPORTIONS



Sample Image Used

CLARITY CHARACTERISTICS



KEY TO SYMBOLS

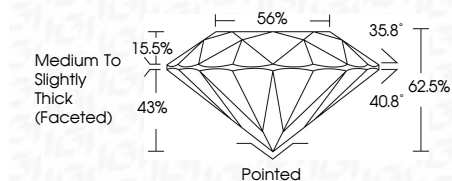
Red symbols indicate internal characteristics. Green symbols indicate external characteristics.

COLOR

D E F G H I J Faint Very Light Light

CLARITY

IF VS 1-2 VS 1-2 SI 1-2 I 1-3
Internally Flawless Very Very Slightly Included Very Slightly Included Slightly Included Included



ADDITIONAL GRADING INFORMATION

Polish EXCELLENT

Symmetry EXCELLENT

Fluorescence NONE

Inscription(s) IGI LG653441571

Comments: As Grown - No indication of post-growth treatment. This Laboratory Grown Diamond was created by High Pressure High Temperature (HPHT) growth process. Type II



IGI



September 25, 2024
IGI Report No. LG653441571
ROUND BRILLIANT
1.01 CARAT
Color Grade D
Clarity Grade IF
Depth 62.5%
Table 56%
Medium To Slightly Thick (Faceted)
Pointed
Polish EXCELLENT
Symmetry EXCELLENT
Fluorescence NONE
Inscriptions(s) IGI LG653441571
Comments: As Grown - No indication of post-growth treatment. This Laboratory Grown Diamond was created by High Pressure High Temperature (HPHT) growth process. Type II