



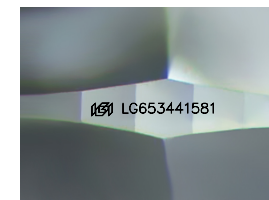
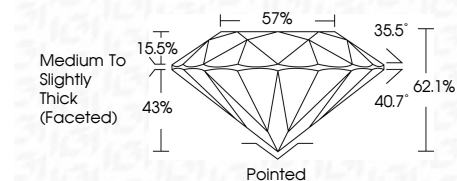
ELECTRONIC COPY

LG653441581
Report verification at igi.org



September 25, 2024
IGI Report Number: LG653441581
Description: LABORATORY GROWN DIAMOND
Shape and Cutting Style: ROUND BRILLIANT
Measurements: 9.48 - 9.52 X 5.90 MM

GRADING RESULTS
Carat Weight: 3.29 CARATS
Color Grade: F
Clarity Grade: VVS 1
Cut Grade: IDEAL



Sample Image Used

ADDITIONAL GRADING INFORMATION
Polish: EXCELLENT
Symmetry: EXCELLENT
Fluorescence: NONE
Inscription(s): IGI LG653441581
Comments: As Grown - No indication of post-growth treatment. This Laboratory Grown Diamond was created by High Pressure High Temperature (HPHT) growth process. Type II



September 25, 2024
IGI Report No. LG653441581
ROUND BRILLIANT
9.48 - 9.52 X 5.90 MM
3.29 CARATS
F
VVS 1
IDEAL
62.1%
57%
Medium To Slightly Thick (Faceted)
Pointed
EXCELLENT
EXCELLENT
NONE
IGI LG653441581
Comments: As Grown - No indication of post-growth treatment. This Laboratory Grown Diamond was created by High Pressure High Temperature (HPHT) growth process. Type II

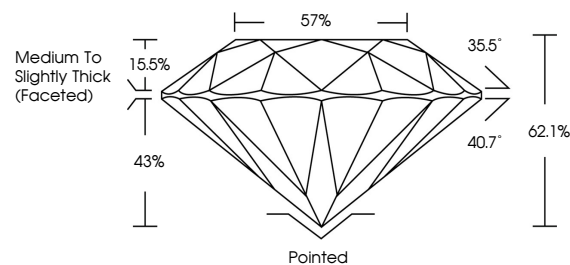
September 25, 2024
IGI Report Number: LG653441581
Description: LABORATORY GROWN DIAMOND
Shape and Cutting Style: ROUND BRILLIANT
Measurements: 9.48 - 9.52 X 5.90 MM

GRADING RESULTS
Carat Weight: 3.29 CARATS
Color Grade: F
Clarity Grade: VVS 1
Cut Grade: IDEAL

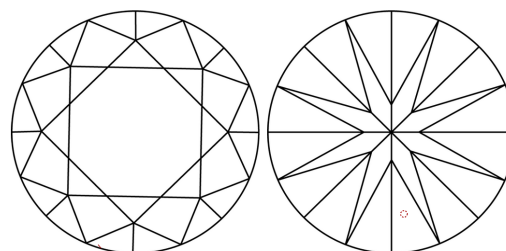
ADDITIONAL GRADING INFORMATION
Polish: EXCELLENT
Symmetry: EXCELLENT
Fluorescence: NONE
Inscription(s): IGI LG653441581

Comments: As Grown - No indication of post-growth treatment. This Laboratory Grown Diamond was created by High Pressure High Temperature (HPHT) growth process. Type II

PROPORTIONS



CLARITY CHARACTERISTICS



KEY TO SYMBOLS

Red symbols indicate internal characteristics. Green symbols indicate external characteristics.

COLOR

D E F G H I J Faint Very Light Light

CLARITY

IF VVS 1-2 VS 1-2 SI 1-2 I 1-3
Internally Flawless Very Very Slightly Included Very Slightly Included Slightly Included Included

