



**INTERNATIONAL
GEMOLOGICAL
INSTITUTE**

LABORATORY GROWN DIAMOND REPORT

September 23, 2024
 IGI Report Number **LG653442984**
 Description **LABORATORY GROWN DIAMOND**
 Shape and Cutting Style **ROUND BRILLIANT**
 Measurements **6.04 - 6.06 X 3.74 MM**

GRADING RESULTS

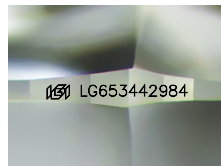
Carat Weight **0.84 CARAT**
 Color Grade **E**
 Clarity Grade **VVS 2**
 Cut Grade **IDEAL**

ADDITIONAL GRADING INFORMATION

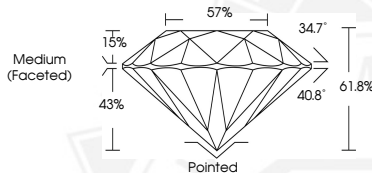
Polish **EXCELLENT**
 Symmetry **EXCELLENT**
 Fluorescence **NONE**
 Inscription(s) **IGI LG653442984**

Comments: As Grown - No indication of post-growth treatment.
 This Laboratory Grown Diamond was created by High Pressure High Temperature (HPHT) growth process.
 Type II

ELECTRONIC COPY



Sample Image Used



September 23, 2024
 IGI Report Number **LG653442984**
 ROUND BRILLIANT
 LABORATORY GROWN DIAMOND
6.04 - 6.06 X 3.74 MM
 Carat Weight **0.84 CARAT**
 Color Grade **E**
 Clarity Grade **VVS 2**
 Cut Grade **IDEAL**
 Polish **EXCELLENT**
 Symmetry **EXCELLENT**
 Fluorescence **NONE**
 Inscription(s) **IGI LG653442984**

Comments: As Grown - No indication of post-growth treatment. This Laboratory Grown Diamond was created by High Pressure High Temperature (HPHT) growth process. Type II



September 23, 2024
 IGI Report Number **LG653442984**
 ROUND BRILLIANT
 LABORATORY GROWN DIAMOND
6.04 - 6.06 X 3.74 MM
 Carat Weight **0.84 CARAT**
 Color Grade **E**
 Clarity Grade **VVS 2**
 Cut Grade **IDEAL**
 Polish **EXCELLENT**
 Symmetry **EXCELLENT**
 Fluorescence **NONE**
 Inscription(s) **IGI LG653442984**

Comments: As Grown - No indication of post-growth treatment. This Laboratory Grown Diamond was created by High Pressure High Temperature (HPHT) growth process. Type II



THIS DOCUMENT WAS PRODUCED WITH THE FOLLOWING SECURITY MEASURES: SPECIAL DOCUMENT PAPER, INK SCREENS, WATERMARK, BACKGROUND DESIGN, HOLOGRAM AND OTHER SECURITY FEATURES NOT LISTED AND DO EXCEED DOCUMENT SECURITY INDUSTRY GUIDELINES.

For terms & conditions and to verify this report, please visit www.igi.org