



ELECTRONIC COPY

LG653444200
Report verification at igi.org



September 24, 2024

IGI Report Number **LG653444200**

Description **LABORATORY GROWN DIAMOND**

Shape and Cutting Style **PRINCESS CUT**

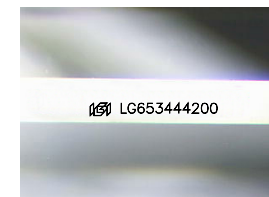
Measurements **9.39 X 9.17 X 6.57 MM**

GRADING RESULTS

Carat Weight **5.02 CARATS**

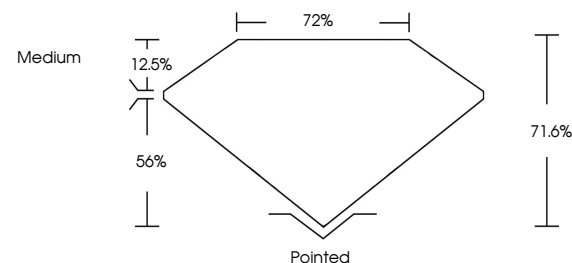
Color Grade **F**

Clarity Grade **VS 1**

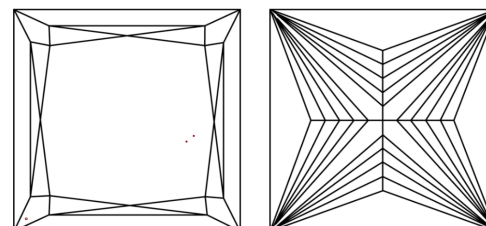


Sample Image Used

PROPORTIONS



CLARITY CHARACTERISTICS



KEY TO SYMBOLS

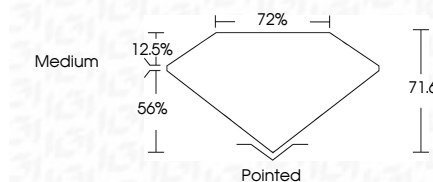
Red symbols indicate internal characteristics.
Green symbols indicate external characteristics.

COLOR

D E F G H I J Faint Very Light Light

CLARITY

IF	VS ¹⁻²	VS ¹⁻²	SI ¹⁻²	I ¹⁻³
Internally Flawless	Very Very Slightly Included	Very Slightly Included	Slightly Included	Included



ADDITIONAL GRADING INFORMATION

Polish **EXCELLENT**

Symmetry **EXCELLENT**

Fluorescence **NONE**

Inscription(s) **IGI LG653444200**

Comments: This Laboratory Grown Diamond was created by Chemical Vapor Deposition (CVD) growth process.
Type IIa



IGI



September 24, 2024
IGI Report No. LG653444200
PRINCESS CUT

5.02 CARATS
F

9.39 X 9.17 X 6.57 MM
Color Grade VS 1
Depth 71.6%
Table 72%
Girdle Medium

Pointed
EXCELLENT
EXCELLENT
NONE
IGI LG653444200

Culet
Polish
Symmetry
Fluorescence
Inscription(s)

Comments: This Laboratory Grown Diamond was created by Chemical Vapor Deposition (CVD) growth process.
Type IIa