



**ELECTRONIC COPY**

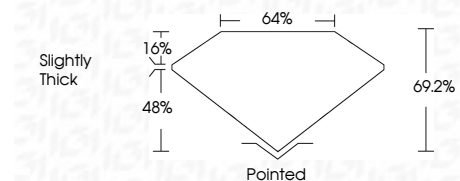
LG653445737  
Report verification at igi.org



September 25, 2024  
IGI Report Number **LG653445737**  
Description **LABORATORY GROWN DIAMOND**  
Shape and Cutting Style **MODIFIED PRINCESS CUT**  
Measurements **7.25 X 7.12 X 4.93 MM**

**GRADING RESULTS**

Carat Weight **2.60 CARATS**  
Color Grade **E**  
Clarity Grade **VS 1**



**ADDITIONAL GRADING INFORMATION**

Polish **EXCELLENT**  
Symmetry **EXCELLENT**  
Fluorescence **NONE**  
Inscription(s) **IGI LG653445737**  
Comments: This Laboratory Grown Diamond was created by Chemical Vapor Deposition (CVD) growth process. Type IIa



**IGI**

September 25, 2024  
IGI Report No LG653445737  
**MODIFIED PRINCESS CUT**  
7.25 X 7.12 X 4.93 MM  
2.60 CARATS  
E  
VS 1  
69.2%  
4.93  
Slightly Thick  
Pointed  
EXCELLENT  
EXCELLENT  
NONE  
IGI LG653445737  
Comments: This Laboratory Grown Diamond was created by Chemical Vapor Deposition (CVD) growth process. Type IIa

**LABORATORY GROWN DIAMOND REPORT**

September 25, 2024  
IGI Report Number **LG653445737**  
Description **LABORATORY GROWN DIAMOND**  
Shape and Cutting Style **MODIFIED PRINCESS CUT**  
Measurements **7.25 X 7.12 X 4.93 MM**

**GRADING RESULTS**

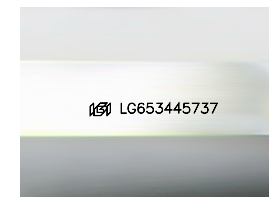
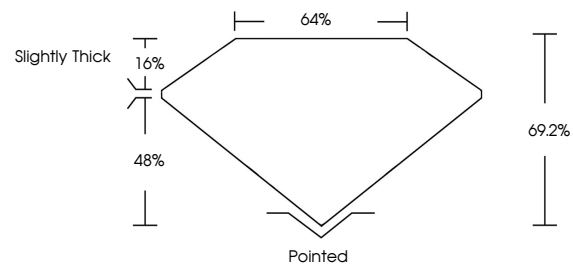
Carat Weight **2.60 CARATS**  
Color Grade **E**  
Clarity Grade **VS 1**

**ADDITIONAL GRADING INFORMATION**

Polish **EXCELLENT**  
Symmetry **EXCELLENT**  
Fluorescence **NONE**  
Inscription(s) **IGI LG653445737**

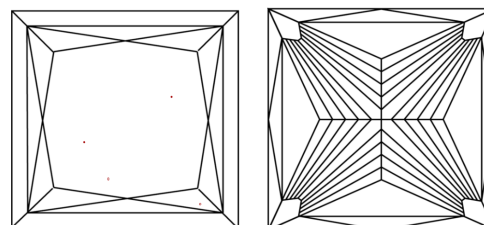
Comments: This Laboratory Grown Diamond was created by Chemical Vapor Deposition (CVD) growth process. Type IIa

**PROPORTIONS**



Sample Image Used

**CLARITY CHARACTERISTICS**



**KEY TO SYMBOLS**

Red symbols indicate internal characteristics.  
Green symbols indicate external characteristics.

**COLOR**

D E F G H I J Faint Very Light Light

**CLARITY**

IF	VS <sup>1-2</sup>	VS <sup>1-2</sup>	SI <sup>1-2</sup>	I <sup>1-3</sup>
Internally Flawless	Very Very Slightly Included	Very Slightly Included	Slightly Included	Included

