



ELECTRONIC COPY

LG653447767 Report verification at igi.org



September 24, 2024 IGI Report Number LG653447767 Description LABORATORY GROWN DIAMOND Shape and Cutting Style CUT CORNERED RECTANGULAR MODIFIED BRILLIANT Measurements 11.68 X 8.35 X 5.83 MM GRADING RESULTS Carat Weight 5.03 CARATS Color Grade F Clarity Grade VS 2

September 24, 2024 IGI Report Number LG653447767 Description LABORATORY GROWN DIAMOND Shape and Cutting Style CUT CORNERED RECTANGULAR MODIFIED BRILLIANT Measurements 11.68 X 8.35 X 5.83 MM

GRADING RESULTS

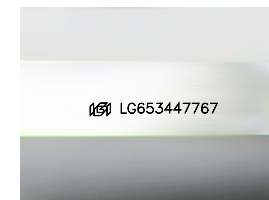
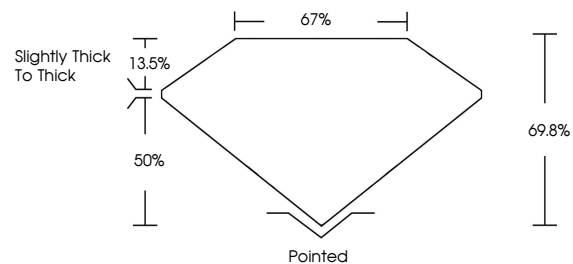
Carat Weight 5.03 CARATS Color Grade F Clarity Grade VS 2

ADDITIONAL GRADING INFORMATION

Polish EXCELLENT Symmetry EXCELLENT Fluorescence NONE Inscription(s) LG653447767

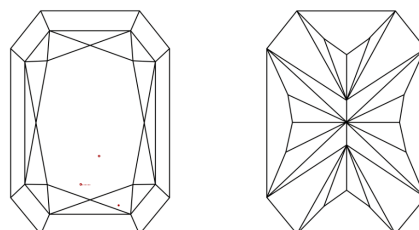
Comments: This Laboratory Grown Diamond was created by Chemical Vapor Deposition (CVD) growth process. Type IIa

PROPORTIONS



Sample Image Used

CLARITY CHARACTERISTICS



KEY TO SYMBOLS

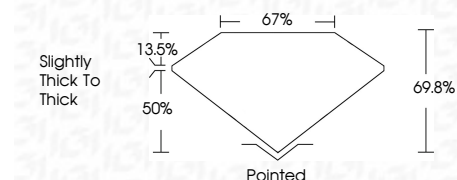
Red symbols indicate internal characteristics. Green symbols indicate external characteristics.

COLOR

D E F G H I J Faint Very Light Light

CLARITY

IF VS 1-2 VS 1-2 SI 1-2 I 1-3 Internally Flawless Very Very Slightly Included Very Slightly Included Slightly Included Included



ADDITIONAL GRADING INFORMATION

Polish EXCELLENT Symmetry EXCELLENT Fluorescence NONE Inscription(s) LG653447767 Comments: This Laboratory Grown Diamond was created by Chemical Vapor Deposition (CVD) growth process. Type IIa



September 24, 2024 IGI Report No LG653447767 CUT CORNERED RECT. MODIFIED BRILLIANT 5.03 CARATS F VS 2 69.8% 67% Slightly Thick To Thick Pointed EXCELLENT EXCELLENT NONE NONE LG653447767 Comments: This Laboratory Grown Diamond was created by Chemical Vapor Deposition (CVD) growth process. Type IIa