



ELECTRONIC COPY

LABORATORY GROWN DIAMOND REPORT

September 25, 2024
IGI Report Number LG653447915
Description LABORATORY GROWN DIAMOND
Shape and Cutting Style EMERALD CUT
Measurements 10.85 X 7.58 X 5.15 MM

GRADING RESULTS

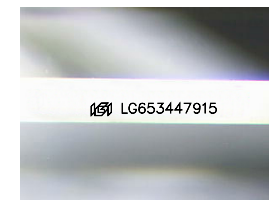
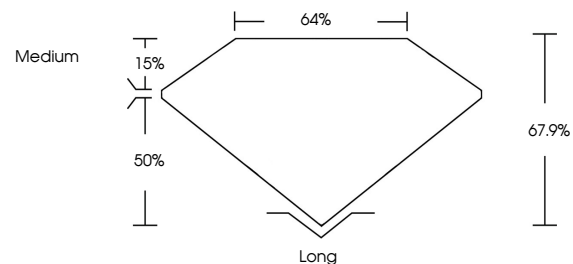
Carat Weight 4.07 CARATS
Color Grade G
Clarity Grade VVS 2

ADDITIONAL GRADING INFORMATION

Polish EXCELLENT
Symmetry EXCELLENT
Fluorescence NONE
Inscription(s) IGI LG653447915

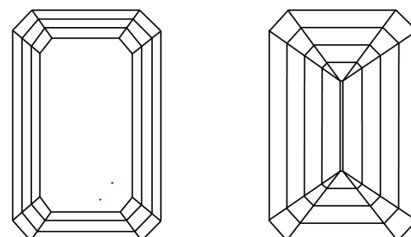
Comments: This Laboratory Grown Diamond was created by Chemical Vapor Deposition (CVD) growth process. Type IIa

PROPORTIONS



Sample Image Used

CLARITY CHARACTERISTICS



KEY TO SYMBOLS

Red symbols indicate internal characteristics.
Green symbols indicate external characteristics.

COLOR

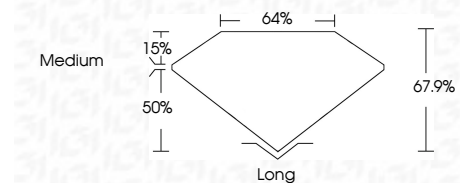
D E F G H I J Faint Very Light Light

CLARITY

IF	VS ¹⁻²	VS ¹⁻²	SI ¹⁻²	I ¹⁻³
Internally Flawless	Very Very Slightly Included	Very Slightly Included	Slightly Included	Included



September 25, 2024
IGI Report Number LG653447915
Description LABORATORY GROWN DIAMOND
Shape and Cutting Style EMERALD CUT
Measurements 10.85 X 7.58 X 5.15 MM
GRADING RESULTS
Carat Weight 4.07 CARATS
Color Grade G
Clarity Grade VVS 2



ADDITIONAL GRADING INFORMATION

Polish EXCELLENT
Symmetry EXCELLENT
Fluorescence NONE
Inscription(s) IGI LG653447915
Comments: This Laboratory Grown Diamond was created by Chemical Vapor Deposition (CVD) growth process. Type IIa



IGI



September 25, 2024
IGI Report No LG653447915
EMERALD CUT
10.85 X 7.58 X 5.15 MM
4.07 CARATS
Color Grade G
Clarity Grade VVS 2
Depth 67.9%
Table 64%
Girdle Medium
Culet Long
Polish EXCELLENT
Symmetry EXCELLENT
Fluorescence NONE
Inscription(s) IGI LG653447915
Comments: This Laboratory Grown Diamond was created by Chemical Vapor Deposition (CVD) growth process. Type IIa