



ELECTRONIC COPY

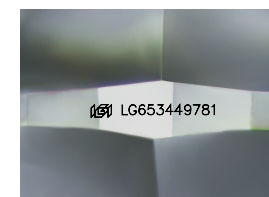
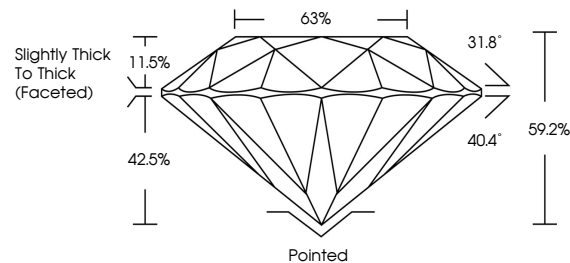
LG653449781 Report verification at igi.org



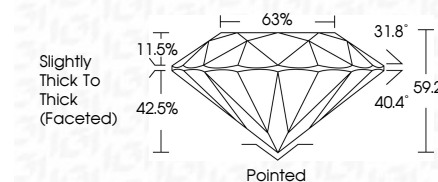
September 24, 2024
IGI Report Number LG653449781
Description LABORATORY GROWN DIAMOND
Shape and Cutting Style ROUND BRILLIANT
Measurements 9.26 - 9.32 X 5.50 MM
GRADING RESULTS
Carat Weight 3.00 CARATS
Color Grade E
Clarity Grade VS 1
Cut Grade VERY GOOD

September 24, 2024
IGI Report Number LG653449781
Description LABORATORY GROWN DIAMOND
Shape and Cutting Style ROUND BRILLIANT
Measurements 9.26 - 9.32 X 5.50 MM
GRADING RESULTS
Carat Weight 3.00 CARATS
Color Grade E
Clarity Grade VS 1
Cut Grade VERY GOOD

PROPORTIONS



Sample Image Used



ADDITIONAL GRADING INFORMATION

Polish EXCELLENT
Symmetry VERY GOOD
Fluorescence NONE
Inscription(s) IGI LG653449781

Comments: This Laboratory Grown Diamond was created by Chemical Vapor Deposition (CVD) growth process. Type IIa

ADDITIONAL GRADING INFORMATION

Polish EXCELLENT
Symmetry VERY GOOD
Fluorescence NONE
Inscription(s) IGI LG653449781
Comments: This Laboratory Grown Diamond was created by Chemical Vapor Deposition (CVD) growth process. Type IIa

COLOR

D E F G H I J Faint Very Light Light

CLARITY

IF VS 1-2 VS 1-2 SI 1-2 I 1-3
Internally Flawless Very Very Slightly Included Very Slightly Included Slightly Included Included



IGI

September 24, 2024
IGI Report No LG653449781
ROUND BRILLIANT
9.26 - 9.32 X 5.50 MM
3.00 CARATS E
VERY GOOD VS 1
59.2% 68%
Slightly Thick To Thick (Faceted)
Pointed EXCELLENT
VERY GOOD NONE
IGI LG653449781
Comments: This Laboratory Grown Diamond was created by Chemical Vapor Deposition (CVD) growth process. Type IIa