



ELECTRONIC COPY

LG653452635
Report verification at igi.org



September 23, 2024

IGI Report Number **LG653452635**

Description **LABORATORY GROWN DIAMOND**

Shape and Cutting Style **PRINCESS CUT**

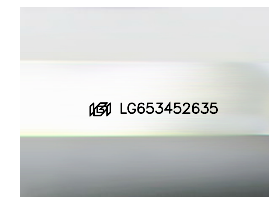
Measurements **5.77 X 5.61 X 3.68 MM**

GRADING RESULTS

Carat Weight **1.11 CARAT**

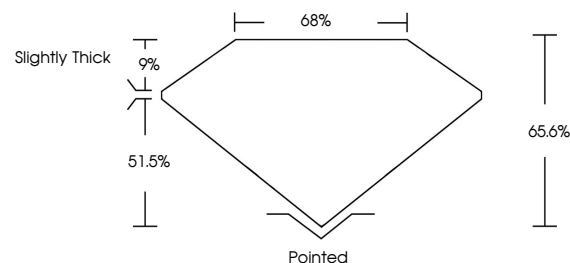
Color Grade **E**

Clarity Grade **VVS 2**

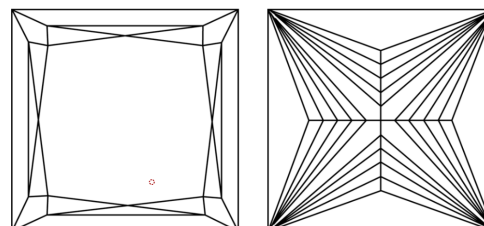


Sample Image Used

PROPORTIONS



CLARITY CHARACTERISTICS



KEY TO SYMBOLS

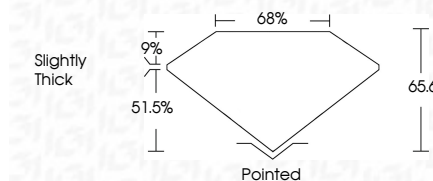
Red symbols indicate internal characteristics.
Green symbols indicate external characteristics.

COLOR

D E F G H I J Faint Very Light Light

CLARITY

IF	VS ¹⁻²	VS ¹⁻²	SI ¹⁻²	I ¹⁻³
Internally Flawless	Very Very Slightly Included	Very Slightly Included	Slightly Included	Included



ADDITIONAL GRADING INFORMATION

Polish **EXCELLENT**

Symmetry **EXCELLENT**

Fluorescence **NONE**

Inscription(s) **IGI LG653452635**

Comments: This Laboratory Grown Diamond was created by Chemical Vapor Deposition (CVD) growth process.
Type IIa



IGI



September 23, 2024
IGI Report No. LG653452635
PRINCESS CUT

1.11 CARAT
E
5.77 X 5.61 X 3.68 MM
VVS 2
Color Grade
E
Depth 51.5%
Table 9%
Girdle
Slightly Thick
Pointed
EXCELLENT
EXCELLENT
NONE
IGI LG653452635

Comments: This Laboratory Grown Diamond was created by Chemical Vapor Deposition (CVD) growth process.
Type IIa