



ELECTRONIC COPY

LABORATORY GROWN DIAMOND REPORT

October 4, 2024  
IGI Report Number LG653452725  
Description LABORATORY GROWN DIAMOND  
Shape and Cutting Style PRINCESS CUT  
Measurements 5.51 X 5.22 X 3.75 MM

GRADING RESULTS

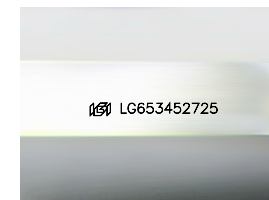
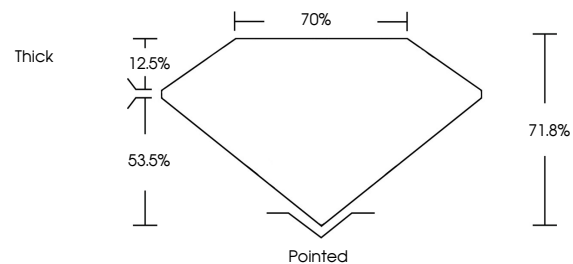
Carat Weight 1.02 CARAT  
Color Grade D  
Clarity Grade VVS 1

ADDITIONAL GRADING INFORMATION

Polish EXCELLENT  
Symmetry EXCELLENT  
Fluorescence NONE  
Inscription(s) IGI LG653452725

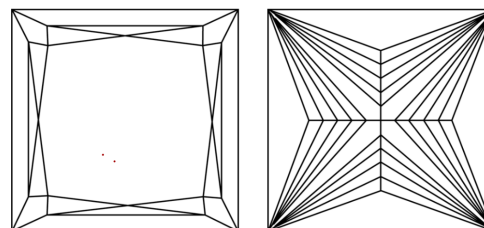
Comments: This Laboratory Grown Diamond was created by Chemical Vapor Deposition (CVD) growth process.  
Type IIa

PROPORTIONS



Sample Image Used

CLARITY CHARACTERISTICS



KEY TO SYMBOLS

Red symbols indicate internal characteristics.  
Green symbols indicate external characteristics.

COLOR

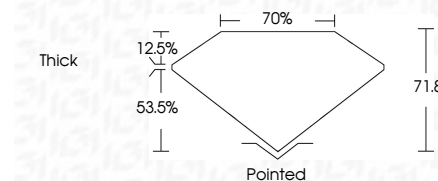
D E F G H I J Faint Very Light Light

CLARITY

IF VS 1-2 VS 1-2 SI 1-2 I 1-3  
Internally Flawless Very Very Slightly Included Very Slightly Included Slightly Included Included



October 4, 2024  
IGI Report Number LG653452725  
Description LABORATORY GROWN DIAMOND  
Shape and Cutting Style PRINCESS CUT  
Measurements 5.51 X 5.22 X 3.75 MM  
GRADING RESULTS  
Carat Weight 1.02 CARAT  
Color Grade D  
Clarity Grade VVS 1



ADDITIONAL GRADING INFORMATION

Polish EXCELLENT  
Symmetry EXCELLENT  
Fluorescence NONE  
Inscription(s) IGI LG653452725  
Comments: This Laboratory Grown Diamond was created by Chemical Vapor Deposition (CVD) growth process.  
Type IIa



October 4, 2024  
IGI Report No LG653452725  
PRINCESS CUT  
5.51 X 5.22 X 3.75 MM  
Carat Weight 1.02 CARAT  
Color Grade D  
Clarity Grade VVS 1  
Depth 71.8%  
Table 70%  
Girdle Thick  
Culet Pointed  
Polish EXCELLENT  
Symmetry EXCELLENT  
Fluorescence NONE  
Inscription(s) IGI LG653452725  
Comments: This Laboratory Grown Diamond was created by Chemical Vapor Deposition (CVD) growth process.  
Type IIa