



ELECTRONIC COPY

LG653453365 Report verification at igi.org



September 26, 2024 IGI Report Number LG653453365 Description LABORATORY GROWN DIAMOND Shape and Cutting Style CUT CORNERED RECTANGULAR MODIFIED BRILLIANT

Measurements 9.76 X 7.23 X 4.85 MM

GRADING RESULTS

Carat Weight 3.01 CARATS Color Grade E Clarity Grade VS 1

September 26, 2024 IGI Report Number LG653453365 Description LABORATORY GROWN DIAMOND Shape and Cutting Style CUT CORNERED RECTANGULAR MODIFIED BRILLIANT Measurements 9.76 X 7.23 X 4.85 MM

GRADING RESULTS

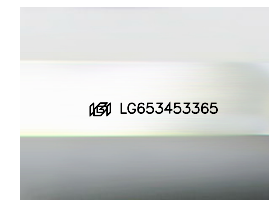
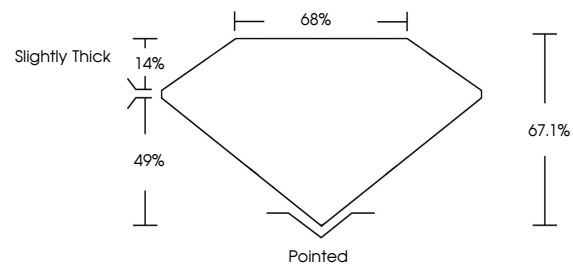
Carat Weight 3.01 CARATS Color Grade E Clarity Grade VS 1

ADDITIONAL GRADING INFORMATION

Polish EXCELLENT Symmetry EXCELLENT Fluorescence NONE Inscription(s) LG653453365

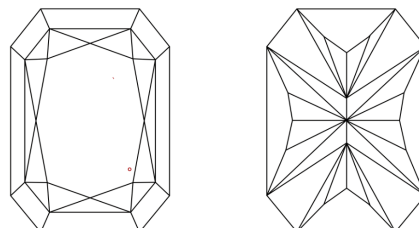
Comments: This Laboratory Grown Diamond was created by Chemical Vapor Deposition (CVD) growth process. Type IIa

PROPORTIONS



Sample Image Used

CLARITY CHARACTERISTICS



KEY TO SYMBOLS

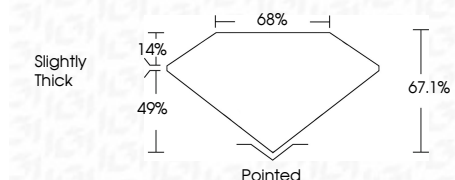
Red symbols indicate internal characteristics. Green symbols indicate external characteristics.

COLOR

D E F G H I J Faint Very Light Light

CLARITY

IF WVS 1-2 VS 1-2 SI 1-2 I 1-3 Internally Flawless Very Very Slightly Included Very Slightly Included Slightly Included Included



ADDITIONAL GRADING INFORMATION

Polish EXCELLENT Symmetry EXCELLENT Fluorescence NONE Inscription(s) LG653453365 Comments: This Laboratory Grown Diamond was created by Chemical Vapor Deposition (CVD) growth process. Type IIa



September 26, 2024 IGI Report No LG653453365 CUT CORNERED RECT. MODIFIED BRILLIANT 3.01 CARATS E VS 1 67.1% 68% Slightly Thick Pointed EXCELLENT EXCELLENT NONE NONE LG653453365

Comments: This Laboratory Grown Diamond was created by Chemical Vapor Deposition (CVD) growth process. Type IIa