



# INTERNATIONAL GEMOLOGICAL INSTITUTE

ELECTRONIC COPY

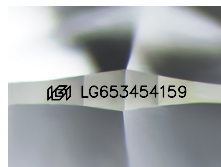
LG653454159



October 3, 2024  
 IGI Report Number LG653454159  
 ROUND BRILLIANT  
 LABORATORY GROWN DIAMOND  
 4.54 - 4.57 X 2.79 MM  
 Carat Weight 0.35 CARAT  
 Color Grade E  
 Clarity Grade VS 1  
 Cut Grade IDEAL  
 Polish EXCELLENT  
 Symmetry EXCELLENT  
 Fluorescence NONE  
 Inscription(s) IGI LG653454159

## LABORATORY GROWN DIAMOND REPORT

October 3, 2024  
 IGI Report Number LG653454159  
 Description LABORATORY GROWN DIAMOND  
 Shape and Cutting Style ROUND BRILLIANT  
 Measurements 4.54 - 4.57 X 2.79 MM



Sample Image Used

### GRADING RESULTS

Carat Weight 0.35 CARAT  
 Color Grade E  
 Clarity Grade VS 1  
 Cut Grade IDEAL

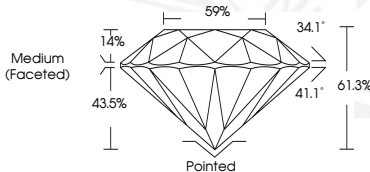
### ADDITIONAL GRADING INFORMATION

Polish EXCELLENT  
 Symmetry EXCELLENT  
 Fluorescence NONE  
 Inscription(s) IGI LG653454159

Comments: This Laboratory Grown Diamond was created by Chemical Vapor Deposition (CVD) growth process. Type IIa



October 3, 2024  
 IGI Report Number LG653454159  
 ROUND BRILLIANT  
 LABORATORY GROWN DIAMOND  
 4.54 - 4.57 X 2.79 MM  
 Carat Weight 0.35 CARAT  
 Color Grade E  
 Clarity Grade VS 1  
 Cut Grade IDEAL  
 Polish EXCELLENT  
 Symmetry EXCELLENT  
 Fluorescence NONE  
 Inscription(s) IGI LG653454159



THIS DOCUMENT WAS PRODUCED WITH THE FOLLOWING SECURITY MEASURES: SPECIAL DOCUMENT PAPER, INK SCREENS, WATERMARK, BACKGROUND DESIGN, HOLOGRAM AND OTHER SECURITY FEATURES NOT LISTED AND DO EXCEED DOCUMENT SECURITY INDUSTRY GUIDELINES.

For terms & conditions and to verify this report, please visit [www.igi.org](http://www.igi.org)