



**INTERNATIONAL
GEMOLOGICAL
INSTITUTE**

ELECTRONIC COPY

LG653454353



September 25, 2024

IGI Report Number **LG653454353**

ROUND BRILLIANT

LABORATORY GROWN DIAMOND

5.84 - 5.89 X 3.55 MM

Carat Weight **0.74 CARAT**

Color Grade **D**

Clarity Grade **VVS 1**

Cut Grade **IDEAL**

Polish **EXCELLENT**

Symmetry **EXCELLENT**

Fluorescence **NONE**

Inscription(s) **IGI LG653454353**

Comments: HEARTS & ARROWS This

Laboratory Grown Diamond was

created by Chemical Vapor

Deposition (CVD) growth process.

Type Iia

LABORATORY GROWN DIAMOND REPORT

September 25, 2024

IGI Report Number

LG653454353

Description

LABORATORY GROWN DIAMOND

Shape and Cutting Style

ROUND BRILLIANT

Measurements

5.84 - 5.89 X 3.55 MM

GRADING RESULTS

Carat Weight

0.74 CARAT

Color Grade

D

Clarity Grade

VVS 1

Cut Grade

IDEAL

ADDITIONAL GRADING INFORMATION

Polish

EXCELLENT

Symmetry

EXCELLENT

Fluorescence

NONE

Inscription(s)

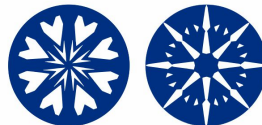
IGI LG653454353

Comments: HEARTS & ARROWS

This Laboratory Grown Diamond was created by Chemical Vapor

Deposition (CVD) growth process.

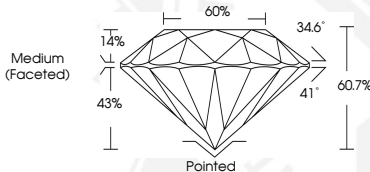
Type Iia



HEARTS & ARROWS



Sample Image Used



September 25, 2024

IGI Report Number **LG653454353**

ROUND BRILLIANT

LABORATORY GROWN DIAMOND

5.84 - 5.89 X 3.55 MM

Carat Weight **0.74 CARAT**

Color Grade **D**

Clarity Grade **VVS 1**

Cut Grade **IDEAL**

Polish **EXCELLENT**

Symmetry **EXCELLENT**

Fluorescence **NONE**

Inscription(s) **IGI LG653454353**

Comments: HEARTS & ARROWS This

Laboratory Grown Diamond was

created by Chemical Vapor

Deposition (CVD) growth process.

Type Iia

THIS DOCUMENT WAS PRODUCED WITH THE FOLLOWING SECURITY MEASURES: SPECIAL DOCUMENT PAPER, INK SCREENS, WATERMARK, BACKGROUND DESIGNS, HOLOGRAM AND OTHER SECURITY FEATURES NOT LISTED AND DO EXCEED DOCUMENT SECURITY INDUSTRY GUIDELINES.

For terms & conditions and to verify this report, please visit www.igi.org