



# INTERNATIONAL GEMOLOGICAL INSTITUTE

ELECTRONIC COPY

LG653454575



September 25, 2024

IGI Report Number LG653454575

EMERALD CUT

LABORATORY GROWN DIAMOND

5.30 X 3.65 X 2.23 MM

Carat Weight 0.41 CARAT

Color Grade D

Clarity Grade VVS 2

Polish VERY GOOD

Symmetry VERY GOOD

Fluorescence NONE

Inscription(s) IGI LG653454575

Comments: This Laboratory Grown Diamond was created by Chemical Vapor Deposition (CVD) growth process. Type IIa

## LABORATORY GROWN DIAMOND REPORT

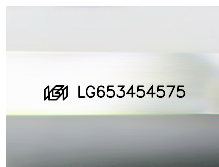
September 25, 2024

IGI Report Number LG653454575

Description LABORATORY GROWN DIAMOND

Shape and Cutting Style EMERALD CUT

Measurements 5.30 X 3.65 X 2.23 MM



Sample Image Used

### GRADING RESULTS

Carat Weight 0.41 CARAT

Color Grade D

Clarity Grade VVS 2

### ADDITIONAL GRADING INFORMATION

Polish VERY GOOD

Symmetry VERY GOOD

Fluorescence NONE

Inscription(s) IGI LG653454575

Comments: This Laboratory Grown Diamond was created by Chemical Vapor Deposition (CVD) growth process. Type IIa



September 25, 2024

IGI Report Number LG653454575

EMERALD CUT

LABORATORY GROWN DIAMOND

5.30 X 3.65 X 2.23 MM

Carat Weight 0.41 CARAT

Color Grade D

Clarity Grade VVS 2

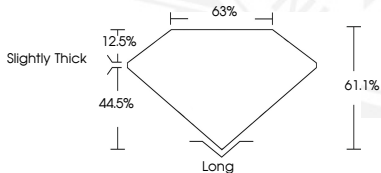
Polish VERY GOOD

Symmetry VERY GOOD

Fluorescence NONE

Inscription(s) IGI LG653454575

Comments: This Laboratory Grown Diamond was created by Chemical Vapor Deposition (CVD) growth process. Type IIa



THIS DOCUMENT WAS PRODUCED WITH THE FOLLOWING SECURITY MEASURES: SPECIAL DOCUMENT PAPER, INK SCREENS, WATERMARK, BACKGROUND DESIGN, HOLOGRAM AND OTHER SECURITY FEATURES NOT LISTED AND DO EXCEED DOCUMENT SECURITY INDUSTRY GUIDELINES.

For terms & conditions and to verify this report, please visit [www.igi.org](http://www.igi.org)