



ELECTRONIC COPY

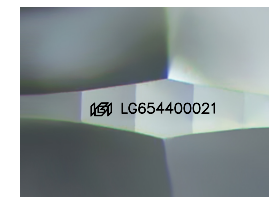
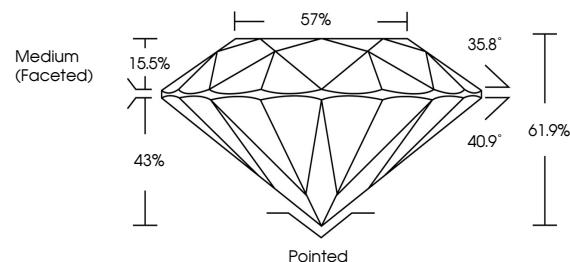
LG654400021
Report verification at igi.org



October 1, 2024
IGI Report Number: LG654400021
Description: LABORATORY GROWN DIAMOND
Shape and Cutting Style: ROUND BRILLIANT
Measurements: 9.26 - 9.33 X 5.74 MM
GRADING RESULTS
Carat Weight: 3.01 CARATS
Color Grade: D
Clarity Grade: INTERNALLY FLAWLESS
Cut Grade: IDEAL

October 1, 2024
IGI Report Number: LG654400021
Description: LABORATORY GROWN DIAMOND
Shape and Cutting Style: ROUND BRILLIANT
Measurements: 9.26 - 9.33 X 5.74 MM

PROPORTIONS

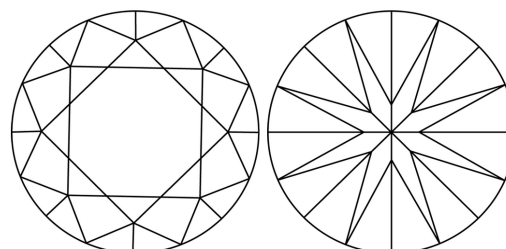


Sample Image Used

GRADING RESULTS

Carat Weight: 3.01 CARATS
Color Grade: D
Clarity Grade: INTERNALLY FLAWLESS
Cut Grade: IDEAL

CLARITY CHARACTERISTICS



KEY TO SYMBOLS

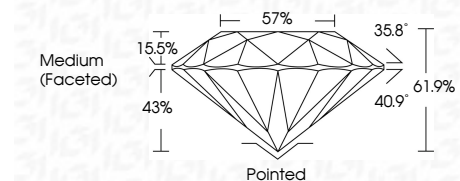
Red symbols indicate internal characteristics.
Green symbols indicate external characteristics.

COLOR

D E F G H I J Faint Very Light Light

CLARITY

IF VS 1-2 VS 1-2 SI 1-2 I 1-3
Internally Flawless Very Very Slightly Included Very Slightly Included Slightly Included Included



ADDITIONAL GRADING INFORMATION

Polish: EXCELLENT
Symmetry: EXCELLENT
Fluorescence: NONE
Inscription(s): IGI LG654400021
Comments: As Grown - No indication of post-growth treatment.
This Laboratory Grown Diamond was created by High Pressure High Temperature (HPHT) growth process.
Type II

ADDITIONAL GRADING INFORMATION

Polish: EXCELLENT
Symmetry: EXCELLENT
Fluorescence: NONE
Inscription(s): IGI LG654400021

Comments: As Grown - No indication of post-growth treatment.
This Laboratory Grown Diamond was created by High Pressure High Temperature (HPHT) growth process.
Type II



Summary table with columns: Date, Report No, Shape, Carat Weight, Color Grade, Clarity Grade, Depth, Table, Girdle, Cut, Polish, Symmetry, Fluorescence, Inscription(s), Comments.