



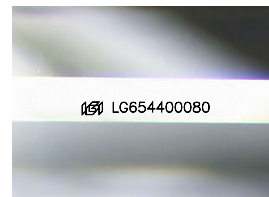
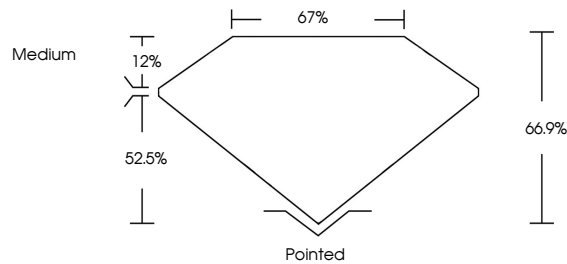
**INTERNATIONAL
GEMOLOGICAL
INSTITUTE**

ELECTRONIC COPY

LABORATORY GROWN DIAMOND REPORT

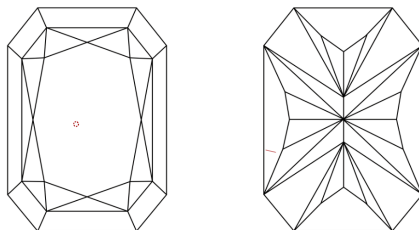
LG654400080
Report verification at igi.org

PROPORTIONS



Sample Image Used

CLARITY CHARACTERISTICS



KEY TO SYMBOLS

Red symbols indicate internal characteristics.
Green symbols indicate external characteristics.

COLOR

D E F G H I J Faint Very Light Light

CLARITY

IF	WVS ¹⁻²	VS ¹⁻²	SI ¹⁻²	I ¹⁻³
Internally Flawless	Very Very Slightly Included	Very Slightly Included	Slightly Included	Included



© IGI 2020, International Gemological Institute

FD - 10 20

LABORATORY GROWN DIAMOND REPORT



September 26, 2024

IGI Report Number **LG654400080**

Description	LABORATORY GROWN DIAMOND
-------------	--------------------------

Shape and Cutting Style

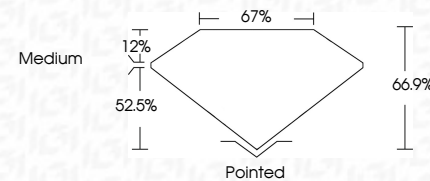
Measurements **9.37 X 6.77 X 4.53 MM**

GRADING RESULTS

Carat Weight **2.39 CARATS**

Color Grade	E
-------------	---

Clarity Grade VS 2



ADDITIONAL GRADING INFORMATION

Polish **EXCELLENT**Symmetry **EXCELLENT**Fluorescence **NONE**Inscription(s)  LG654400080

Comments: This Laboratory Grown Diamond was created by Chemical Vapor Deposition (CVD) growth process.
Type IIa



IG

September 26, 2024	2.59 CARATS	Vs 2	Polished
IGT Report No LG564A0090	Carat Weight	66.9%	EXCELLENT
CUT REPORT RECT. MODIFIED BRILLIANT	Color Grade	67%	EXCELLENT
	Clarity Grade	Medium	NONE
	Depth		681 LG564A0090
	Table		
	Girdle		
	Culet		
	Polish		
	Symmetry		
	Fluorescence		
	Inscription(s)		
	Comments:		
	The Laboratory Grown Diamond was created by Chemical Vapor Deposition (CVD) growth process.		
	Type Iia		

www.igi.org