



ELECTRONIC COPY

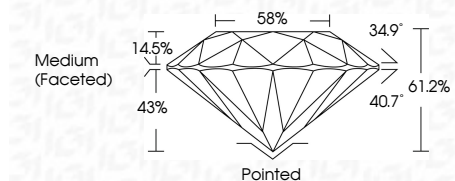
LG654401053
Report verification at igi.org



September 27, 2024
IGI Report Number LG654401053
Description LABORATORY GROWN DIAMOND
Shape and Cutting Style ROUND BRILLIANT
Measurements 9.78 - 9.81 X 5.99 MM

GRADING RESULTS

Carat Weight 3.56 CARATS
Color Grade D
Clarity Grade VS 2
Cut Grade IDEAL



ADDITIONAL GRADING INFORMATION

Polish EXCELLENT
Symmetry EXCELLENT
Fluorescence NONE
Inscription(s) LG654401053
Comments: HEARTS & ARROWS
This Laboratory Grown Diamond was created by Chemical Vapor Deposition (CVD) growth process. Type IIa



Table with 2 columns: Property and Value. Includes Carat Weight (3.56 CARATS), Color Grade (D), Clarity Grade (VS 2), Depth (61.2%), and various grading results.

September 27, 2024
IGI Report No LG654401053
ROUND BRILLIANT

9.78 - 9.81 X 5.99 MM

3.56 CARATS

D

VS 2

IDEAL

61.2%

58%

Medium (Faceted)

Pointed

EXCELLENT

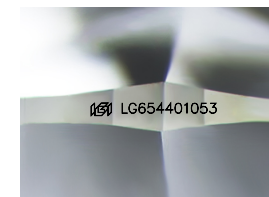
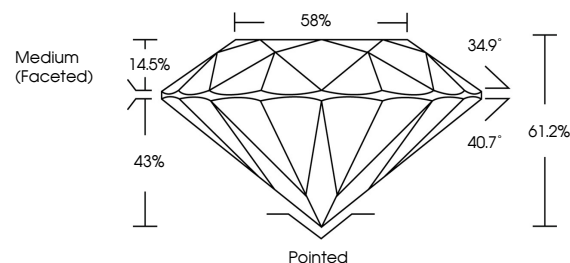
EXCELLENT

NONE

IGI LG654401053

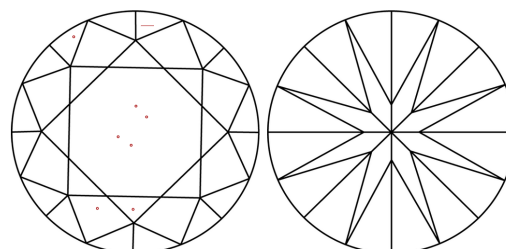
Comments: HEARTS & ARROWS
This Laboratory Grown Diamond was created by Chemical Vapor Deposition (CVD) growth process. Type IIa

PROPORTIONS



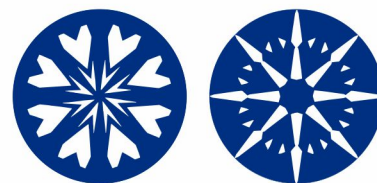
Sample Image Used

CLARITY CHARACTERISTICS



KEY TO SYMBOLS

Red symbols indicate internal characteristics.
Green symbols indicate external characteristics.



COLOR

D E F G H I J Faint Very Light Light

CLARITY

IF VS 1-2 VS 1-2 SI 1-2 I 1-3
Internally Flawless Very Very Slightly Included Very Slightly Included Slightly Included Included