



ELECTRONIC COPY

LG654401623
Report verification at igi.org



September 26, 2024

IGI Report Number **LG654401623**

Description **LABORATORY GROWN DIAMOND**

Shape and Cutting Style **PRINCESS CUT**

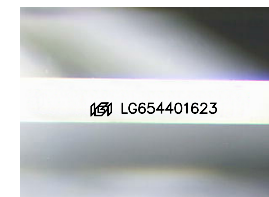
Measurements **5.59 X 5.54 X 4.05 MM**

GRADING RESULTS

Carat Weight **1.08 CARAT**

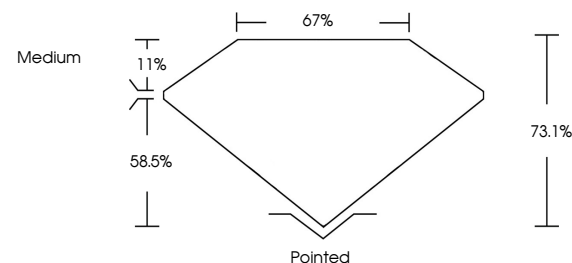
Color Grade **D**

Clarity Grade **VVS 2**

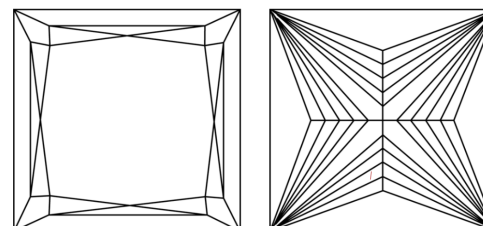


Sample Image Used

PROPORTIONS



CLARITY CHARACTERISTICS



KEY TO SYMBOLS

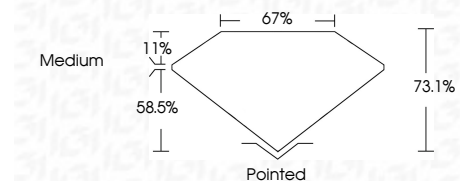
Red symbols indicate internal characteristics.
Green symbols indicate external characteristics.

COLOR

D E F G H I J Faint Very Light Light

CLARITY

IF	VS ¹⁻²	VS ¹⁻²	SI ¹⁻²	I ¹⁻³
Internally Flawless	Very Very Slightly Included	Very Slightly Included	Slightly Included	Included



ADDITIONAL GRADING INFORMATION

Polish **EXCELLENT**

Symmetry **EXCELLENT**

Fluorescence **NONE**

Inscription(s) **IGI LG654401623**

Comments: As Grown - No indication of post-growth treatment.

This Laboratory Grown Diamond was created by High Pressure High Temperature (HPHT) growth process.

Type II



IGI

September 26, 2024
IGI Report No. LG654401623
PRINCESS CUT

1.08 CARAT
D

5.59 X 5.54 X 4.05 MM
VVS 2
D
67%
73.1%
58.5%
Medium

Pointed
EXCELLENT
EXCELLENT
NONE
IGI LG654401623

Comments: As Grown - No indication of post-growth treatment.
This Laboratory Grown Diamond was created by High Pressure High Temperature (HPHT) growth process.
Type II

