



**ELECTRONIC COPY**

LG654401725  
Report verification at igi.org



September 30, 2024

IGI Report Number **LG654401725**

Description **LABORATORY GROWN DIAMOND**

Shape and Cutting Style **PRINCESS CUT**

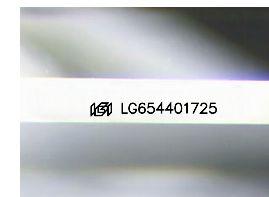
Measurements **5.68 X 5.64 X 4.03 MM**

**GRADING RESULTS**

Carat Weight **1.07 CARAT**

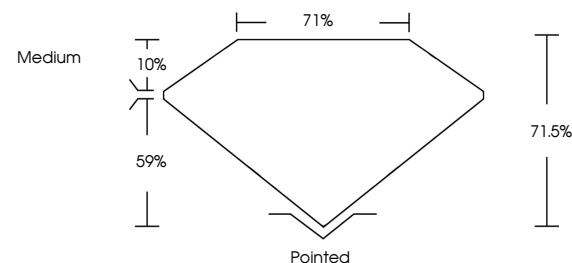
Color Grade **D**

Clarity Grade **VVS 1**

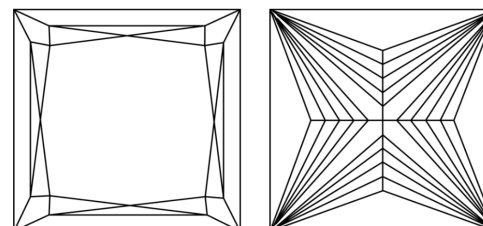


Sample Image Used

**PROPORTIONS**



**CLARITY CHARACTERISTICS**



**KEY TO SYMBOLS**

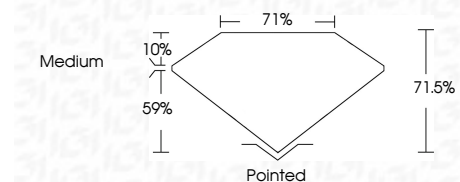
Red symbols indicate internal characteristics.  
Green symbols indicate external characteristics.

**COLOR**

D E F G H I J Faint Very Light Light

**CLARITY**

IF	VS <sup>1-2</sup>	VS <sup>1-2</sup>	SI <sup>1-2</sup>	I <sup>1-3</sup>
Internally Flawless	Very Very Slightly Included	Very Slightly Included	Slightly Included	Included



**ADDITIONAL GRADING INFORMATION**

Polish **EXCELLENT**

Symmetry **EXCELLENT**

Fluorescence **NONE**

Inscription(s) **IGI LG654401725**

Comments: As Grown - No indication of post-growth treatment.

This Laboratory Grown Diamond was created by High Pressure High Temperature (HPHT) growth process.

Type II



**IGI**



September 30, 2024  
IGI Report No. LG654401725  
PRINCESS CUT

1.07 CARAT  
D

5.68 X 5.64 X 4.03 MM  
5.68 X 5.64 X 4.03 MM

Color Grade  
D

Clarity Grade  
VVS 1

Depth  
71.05%

Table  
71%

Graile  
Medium

Culet  
Pointed

Polish  
EXCELLENT

Symmetry  
EXCELLENT

Fluorescence  
NONE

Inscription(s)  
IGI LG654401725

Comments:  
As Grown - No indication of post-growth treatment.  
This Laboratory Grown Diamond was created by High Pressure High Temperature (HPHT) growth process.  
Type II