



ELECTRONIC COPY

LG654408300
Report verification at igi.org



October 1, 2024
IGI Report Number **LG654408300**

Description **LABORATORY GROWN DIAMOND**

Shape and Cutting Style **CUT CORNERED
RECTANGULAR MODIFIED
BRILLIANT**

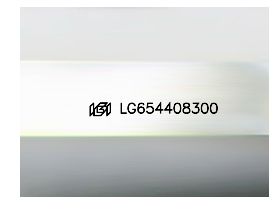
Measurements **8.10 X 5.43 X 3.61 MM**

GRADING RESULTS

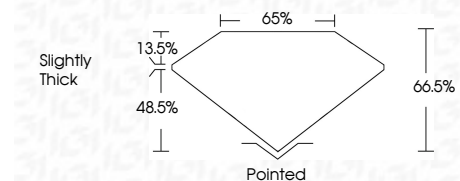
Carat Weight **1.51 CARAT**

Color Grade **FANCY INTENSE YELLOW**

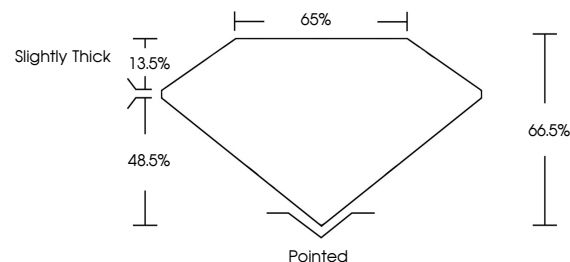
Clarity Grade **VVS 2**



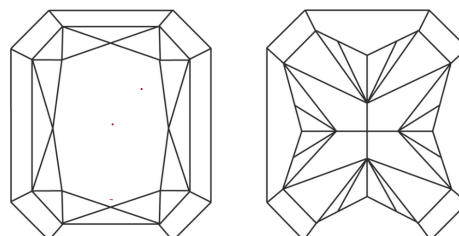
Sample Image Used



PROPORTIONS



CLARITY CHARACTERISTICS



KEY TO SYMBOLS

Red symbols indicate internal characteristics.
Green symbols indicate external characteristics.

COLOR

D E F G H I J Faint Very Light Light

CLARITY

IF	VS ¹⁻²	VS ¹⁻²	SI ¹⁻²	I ¹⁻³
Internally Flawless	Very Very Slightly Included	Very Slightly Included	Slightly Included	Included

ADDITIONAL GRADING INFORMATION

Polish **EXCELLENT**

Symmetry **EXCELLENT**

Fluorescence **NONE**

Inscription(s) **IGI LG654408300**

Comments: This Laboratory Grown Diamond was created by Chemical Vapor Deposition (CVD) growth process.



IGI



October 1, 2024
IGI Report No LG654408300
CUT CORNERED RECT. MODIFIED BRILLIANT
8.10 X 5.43 X 3.61 MM
Carat Weight 1.51 CARAT
Color Grade FANCY INTENSE YELLOW
Clarity Grade VVS 2
Depth 66.5%
Table 65%
Girdle Slightly Thick
Culet Pointed
Polish EXCELLENT
Symmetry EXCELLENT
Fluorescence NONE
Inscription(s) IGI LG654408300
Comments: This Laboratory Grown Diamond was created by Chemical Vapor Deposition (CVD) growth process.