



ELECTRONIC COPY

LG654408717
Report verification at igi.org



September 30, 2024
IGI Report Number: LG654408717
Description: LABORATORY GROWN DIAMOND
Shape and Cutting Style: CUT CORNERED RECTANGULAR MIXED CUT
Measurements: 7.58 X 4.90 X 2.96 MM
Grading Results:
Carat Weight: 1.13 CARAT
Color Grade: F
Clarity Grade: VVS 2

LABORATORY GROWN DIAMOND REPORT

September 30, 2024
IGI Report Number: LG654408717
Description: LABORATORY GROWN DIAMOND
Shape and Cutting Style: CUT CORNERED RECTANGULAR MIXED CUT
Measurements: 7.58 X 4.90 X 2.96 MM

GRADING RESULTS

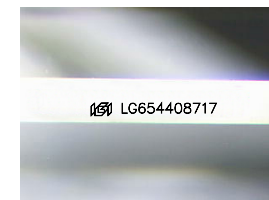
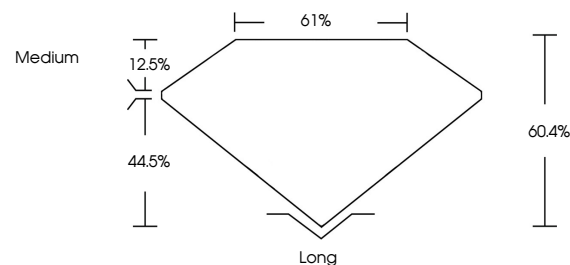
Carat Weight: 1.13 CARAT
Color Grade: F
Clarity Grade: VVS 2

ADDITIONAL GRADING INFORMATION

Polish: EXCELLENT
Symmetry: EXCELLENT
Fluorescence: NONE
Inscription(s): IGI LG654408717

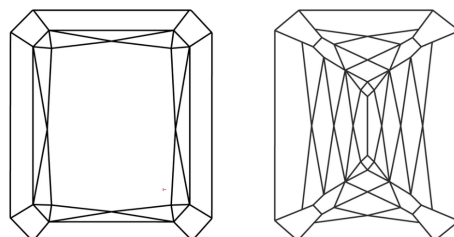
Comments: This Laboratory Grown Diamond was created by Chemical Vapor Deposition (CVD) growth process. Type IIa

PROPORTIONS



Sample Image Used

CLARITY CHARACTERISTICS



KEY TO SYMBOLS

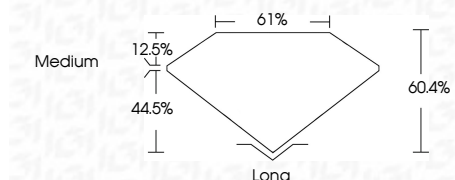
Red symbols indicate internal characteristics.
Green symbols indicate external characteristics.

COLOR

D E F G H I J Faint Very Light Light

CLARITY

Table mapping clarity grades (IF, VVS 1-2, VS 1-2, SI 1-2, I 1-3) to their descriptions (Internally Flawless, Very Very Slightly Included, Very Slightly Included, Slightly Included, Included).



ADDITIONAL GRADING INFORMATION

Polish: EXCELLENT
Symmetry: EXCELLENT
Fluorescence: NONE
Inscription(s): IGI LG654408717
Comments: This Laboratory Grown Diamond was created by Chemical Vapor Deposition (CVD) growth process. Type IIa



IGI



Summary of report details including date, report number, description, measurements, grading results, and additional information.

Comments: This Laboratory Grown Diamond was created by Chemical Vapor Deposition (CVD) growth process. Type IIa