



ELECTRONIC COPY

LABORATORY GROWN DIAMOND REPORT

September 26, 2024
IGI Report Number LG654409215
Description LABORATORY GROWN DIAMOND
Shape and Cutting Style PRINCESS CUT
Measurements 8.72 X 8.56 X 6.13 MM

GRADING RESULTS

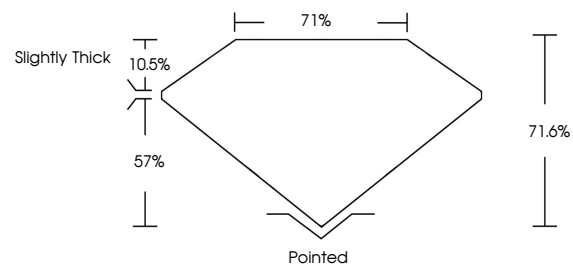
Carat Weight 4.04 CARATS
Color Grade D
Clarity Grade VS 1

ADDITIONAL GRADING INFORMATION

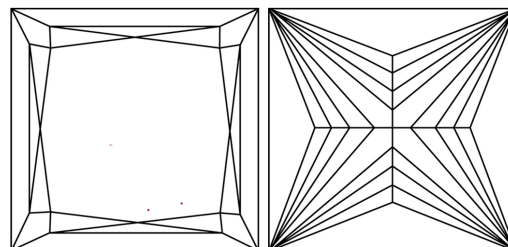
Polish EXCELLENT
Symmetry EXCELLENT
Fluorescence NONE
Inscription(s) IGI LG654409215

Comments: This Laboratory Grown Diamond was created by Chemical Vapor Deposition (CVD) growth process. Type IIa

PROPORTIONS

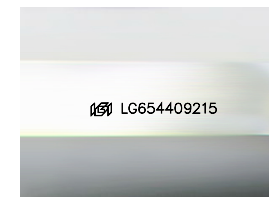


CLARITY CHARACTERISTICS



KEY TO SYMBOLS

Red symbols indicate internal characteristics.
Green symbols indicate external characteristics.



Sample Image Used

COLOR

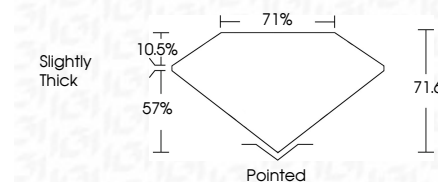
D E F G H I J Faint Very Light Light

CLARITY

IF	VS ¹⁻²	VS ¹⁻²	SI ¹⁻²	I ¹⁻³
Internally Flawless	Very Very Slightly Included	Very Slightly Included	Slightly Included	Included



September 26, 2024
IGI Report Number LG654409215
Description LABORATORY GROWN DIAMOND
Shape and Cutting Style PRINCESS CUT
Measurements 8.72 X 8.56 X 6.13 MM
GRADING RESULTS
Carat Weight 4.04 CARATS
Color Grade D
Clarity Grade VS 1



ADDITIONAL GRADING INFORMATION

Polish EXCELLENT
Symmetry EXCELLENT
Fluorescence NONE
Inscription(s) IGI LG654409215
Comments: This Laboratory Grown Diamond was created by Chemical Vapor Deposition (CVD) growth process. Type IIa



IGI



September 26, 2024
IGI Report No LG654409215
PRINCESS CUT

4.04 CARATS
D

8.72 X 8.56 X 6.13 MM
71.6%
71%
Slightly Thick

Pointed
EXCELLENT
EXCELLENT
NONE
IGI LG654409215

Comments: This Laboratory Grown Diamond was created by Chemical Vapor Deposition (CVD) growth process. Type IIa