



ELECTRONIC COPY

LG654409331
Report verification at igi.org



September 29, 2024

IGI Report Number **LG654409331**

Description **LABORATORY GROWN DIAMOND**

Shape and Cutting Style **ROUND BRILLIANT**

Measurements **6.95 - 6.98 X 4.27 MM**

GRADING RESULTS

Carat Weight **1.26 CARAT**

Color Grade **D**

Clarity Grade **VS 2**

Cut Grade **IDEAL**

September 29, 2024
IGI Report Number **LG654409331**
Description **LABORATORY GROWN DIAMOND**
Shape and Cutting Style **ROUND BRILLIANT**
Measurements **6.95 - 6.98 X 4.27 MM**

GRADING RESULTS

Carat Weight **1.26 CARAT**

Color Grade **D**

Clarity Grade **VS 2**

Cut Grade **IDEAL**

ADDITIONAL GRADING INFORMATION

Polish **EXCELLENT**

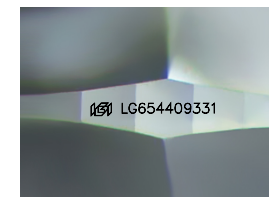
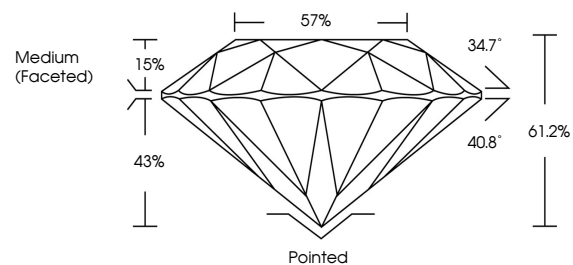
Symmetry **EXCELLENT**

Fluorescence **NONE**

Inscription(s) **LG654409331**

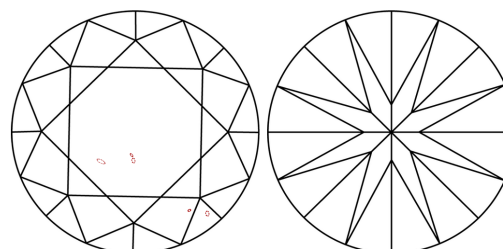
Comments: This Laboratory Grown Diamond was created by Chemical Vapor Deposition (CVD) growth process.
Type IIa

PROPORTIONS



Sample Image Used

CLARITY CHARACTERISTICS



KEY TO SYMBOLS

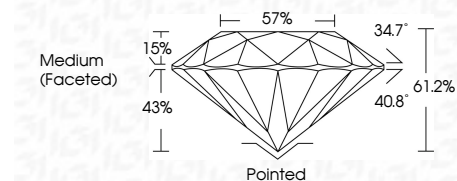
Red symbols indicate internal characteristics.
Green symbols indicate external characteristics.

COLOR

D E F G H I J Faint Very Light Light

CLARITY

IF	VS ¹⁻²	VS ¹⁻²	SI ¹⁻²	I ¹⁻³
Internally Flawless	Very Very Slightly Included	Very Slightly Included	Slightly Included	Included



ADDITIONAL GRADING INFORMATION

Polish **EXCELLENT**

Symmetry **EXCELLENT**

Fluorescence **NONE**

Inscription(s) **LG654409331**

Comments: This Laboratory Grown Diamond was created by Chemical Vapor Deposition (CVD) growth process.
Type IIa



IGI



September 29, 2024	1.26 CARAT	D	VS 2	IDEAL	57%	Medium (Faceted)	Pointed	EXCELLENT	EXCELLENT	NONE	LG654409331
IGI Report No LG654409331	Carat Weight	Color Grade	Clarity Grade	Cut Grade	Depth	Girdle	Culet	Polish	Symmetry	Fluorescence	Inscription(s)
ROUND BRILLIANT	6.95 - 6.98 X 4.27 MM	D	VS 2	IDEAL	61.2%	57%	None	EXCELLENT	EXCELLENT	NONE	LG654409331

Comments: This Laboratory Grown Diamond was created by Chemical Vapor Deposition (CVD) growth process.
Type IIa