



ELECTRONIC COPY

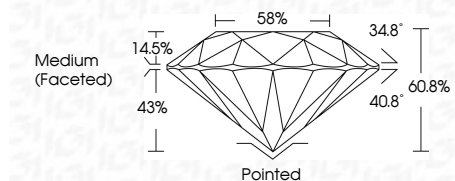
LG654409345
Report verification at igi.org



October 1, 2024
IGI Report Number: LG654409345
Description: LABORATORY GROWN DIAMOND
Shape and Cutting Style: ROUND BRILLIANT
Measurements: 6.98 - 7.01 X 4.25 MM

GRADING RESULTS

Carat Weight: 1.27 CARAT
Color Grade: D
Clarity Grade: VS 1
Cut Grade: IDEAL



ADDITIONAL GRADING INFORMATION

Polish: EXCELLENT
Symmetry: EXCELLENT
Fluorescence: NONE
Inscription(s): IGI LG654409345
Comments: This Laboratory Grown Diamond was created by Chemical Vapor Deposition (CVD) growth process. Type IIa



Table with 2 columns: Property and Value. Includes Carat Weight (1.27 CARAT), Color Grade (D), Clarity Grade (VS 1), Depth (60.8%), Table (58%), Girdle (Medium (Faceted)), and Cut (Pointed).

October 1, 2024
IGI Report Number: LG654409345
Description: LABORATORY GROWN DIAMOND
Shape and Cutting Style: ROUND BRILLIANT
Measurements: 6.98 - 7.01 X 4.25 MM

GRADING RESULTS

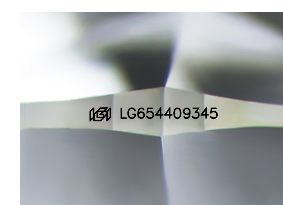
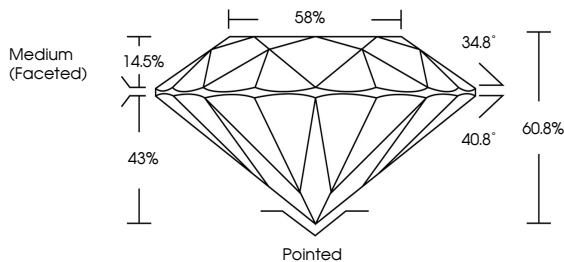
Carat Weight: 1.27 CARAT
Color Grade: D
Clarity Grade: VS 1
Cut Grade: IDEAL

ADDITIONAL GRADING INFORMATION

Polish: EXCELLENT
Symmetry: EXCELLENT
Fluorescence: NONE
Inscription(s): IGI LG654409345

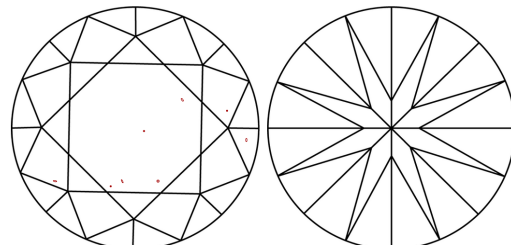
Comments: This Laboratory Grown Diamond was created by Chemical Vapor Deposition (CVD) growth process. Type IIa

PROPORTIONS



Sample Image Used

CLARITY CHARACTERISTICS



KEY TO SYMBOLS

Red symbols indicate internal characteristics.
Green symbols indicate external characteristics.

COLOR

Color scale table with categories: D, E, F, G, H, I, J, Faint, Very Light, Light

CLARITY

Clarity scale table with categories: IF, VS 1-2, VS 1-2, SI 1-2, I 1-3, Internally Flawless, Very Very Slightly Included, Very Slightly Included, Slightly Included, Included



October 1, 2024
IGI Report No LG654409345
ROUND BRILLIANT

Summary table with 2 columns: Property and Value. Includes Carat Weight (1.27 CARAT), Color Grade (D), Clarity Grade (VS 1), Depth (60.8%), Table (58%), Girdle (Medium (Faceted)), and Cut (Pointed).

Comments: This Laboratory Grown Diamond was created by Chemical Vapor Deposition (CVD) growth process. Type IIa