



**ELECTRONIC COPY**

## LABORATORY GROWN DIAMOND REPORT

October 1, 2024	
IGI Report Number	LG654412467
Description	LABORATORY GROWN DIAMOND
Shape and Cutting Style	CUT CORNERED RECTANGULAR MODIFIED BRILLIANT
Measurements	9.66 X 6.90 X 4.51 MM

## GRADING RESULTS

Carat Weight	2.57 CARATS
Color Grade	D
Clarity Grade	VS 2

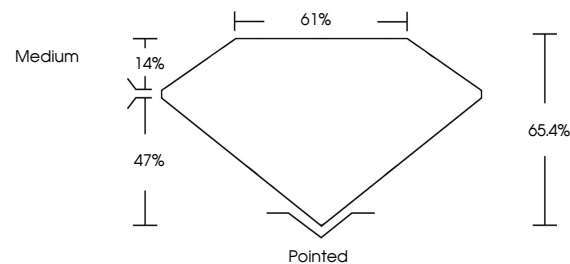
### ADDITIONAL GRADING INFORMATION

Polish	EXCELLENT
Symmetry	EXCELLENT
Fluorescence	NONE
Inscription(s)	 LG654412467

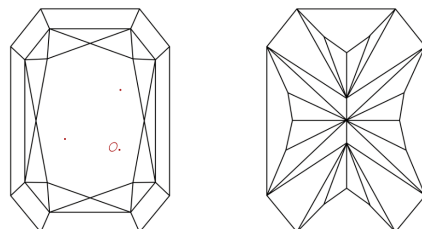
Comments: This Laboratory Grown Diamond was created by Chemical Vapor Deposition (CVD) growth process.  
Type IIa

LG654412467  
Report verification at [igi.org](https://igi.org)

## PROPORTIONS

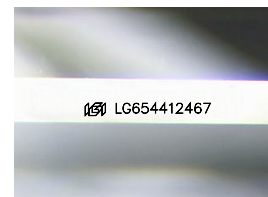


## CLARITY CHARACTERISTICS



## KEY TO SYMBOLS

Red symbols indicate internal characteristics.  
Green symbols indicate external characteristics.



Sample Image Used

**COLOR**

D E F G H I J Faint Very Light Light

## CLARITY

IF	VVS <sup>1-2</sup>	VS <sup>1-2</sup>	SI <sup>1-2</sup>	I <sup>1-3</sup>
Internally Flawless	Very Very Slightly Included	Very Slightly Included	Slightly Included	Included



© IGI 2020, International Gemological Institute

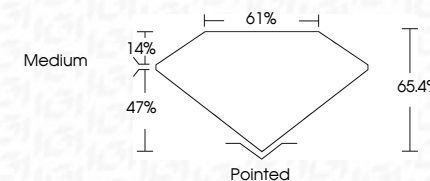
FD - 10 20

**www.igi.org**

## LABORATORY GROWN DIAMOND REPORT



October 1, 2024	
IGI Report Number	LG654412467
Description	LABORATORY GROWN DIAMOND
Shape and Cutting Style	CUT CORNERED RECTANGULAR MODIFIED BRILLIANT
Measurements	9.66 X 6.90 X 4.51 MM
<b>GRADING RESULTS</b>	
Carat Weight	2.57 CARATS
Color Grade	D
Clarity Grade	VS 2



### ADDITIONAL GRADING INFORMATION

Polish	EXCELLENT
Symmetry	EXCELLENT
Fluorescence	NONE
Inscription(s)	<del>(GSI)</del> LG654412467
<p>Comments: This Laboratory Grown Diamond was created by Chemical Vapor Deposition (CVD) growth process.</p> <p>Type IIa</p>	



October 1, 2024	
GI Report No LG654412467	
CUT CORNERED RECT. MODIFIED BRILLIANT	
2.57 CARATS	D
VS 2	
65.4%	
61%	
Medium	
	Pointed
	EXCELLENT
	EXCELLENT
	NONE
	LG654412467

Comments:  
The Laboratory Grown Diamond was  
created by Chemical Vapor Deposition  
(CVD) growth process,  
type IIa