



ELECTRONIC COPY

LABORATORY GROWN DIAMOND REPORT

October 10, 2024
IGI Report Number LG654417455
Description LABORATORY GROWN DIAMOND
Shape and Cutting Style EMERALD CUT
Measurements 6.71 X 4.88 X 3.32 MM

GRADING RESULTS

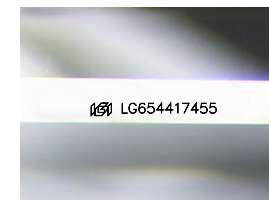
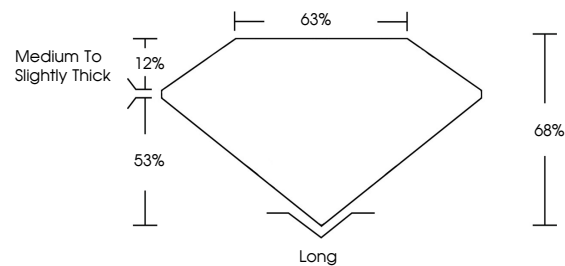
Carat Weight 1.02 CARAT
Color Grade E
Clarity Grade VVS 2

ADDITIONAL GRADING INFORMATION

Polish VERY GOOD
Symmetry VERY GOOD
Fluorescence NONE
Inscription(s) LG654417455

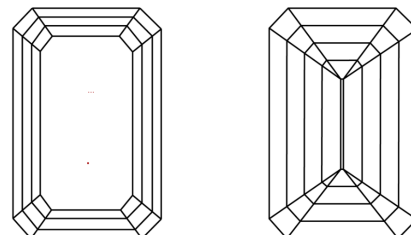
Comments: This Laboratory Grown Diamond was created by Chemical Vapor Deposition (CVD) growth process.
Type IIa

PROPORTIONS



Sample Image Used

CLARITY CHARACTERISTICS



KEY TO SYMBOLS

Red symbols indicate internal characteristics.
Green symbols indicate external characteristics.

COLOR

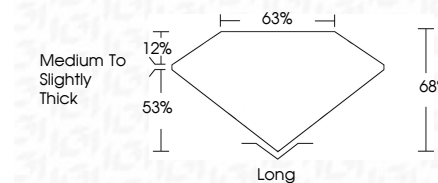
D E F G H I J Faint Very Light Light

CLARITY

IF VS 1-2 VS 1-2 SI 1-2 I 1-3
Internally Flawless Very Very Slightly Included Very Slightly Included Slightly Included Included



October 10, 2024
IGI Report Number LG654417455
Description LABORATORY GROWN DIAMOND
Shape and Cutting Style EMERALD CUT
Measurements 6.71 X 4.88 X 3.32 MM
GRADING RESULTS
Carat Weight 1.02 CARAT
Color Grade E
Clarity Grade VVS 2



ADDITIONAL GRADING INFORMATION

Polish VERY GOOD
Symmetry VERY GOOD
Fluorescence NONE
Inscription(s) LG654417455
Comments: This Laboratory Grown Diamond was created by Chemical Vapor Deposition (CVD) growth process.
Type IIa



October 10, 2024
IGI Report No. LG654417455
EMERALD CUT
6.71 X 4.88 X 3.32 MM
Carat Weight 1.02 CARAT
Color Grade E
Clarity Grade VVS 2
Depth 68%
Table 63%
Girdle Medium to Slightly Thick
Culet Long
Polish VERY GOOD
Symmetry VERY GOOD
Fluorescence NONE
Inscription(s) LG654417455
Comments: This Laboratory Grown Diamond was created by Chemical Vapor Deposition (CVD) growth process.
Type IIa